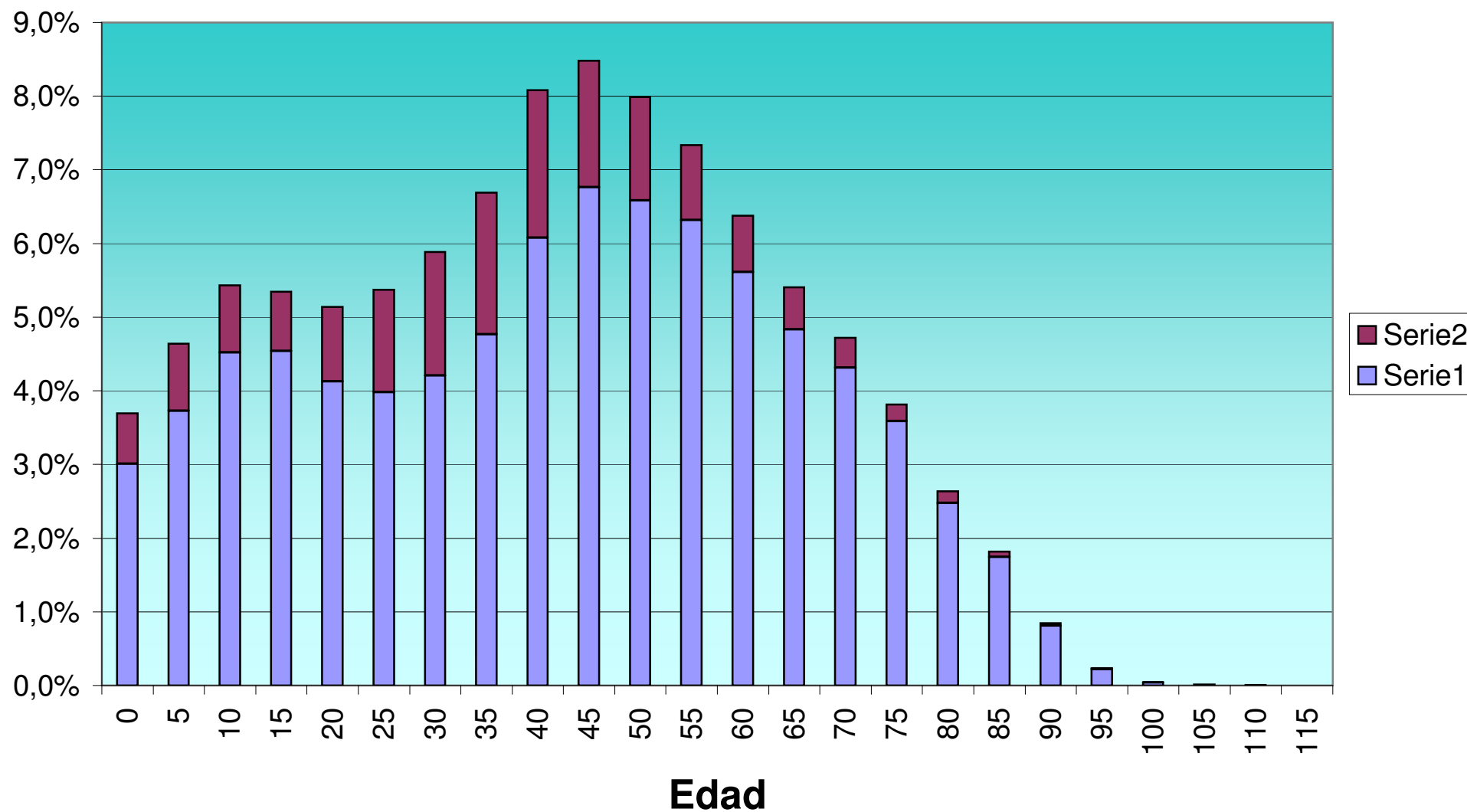


| Totales de población por edad y nivel de estudios | | | | | | | | | | | | | | | | | |
|---|---------|--------|-------------|------------|----------|--------|---------|-------|----------|-----------|----------|---------|-------------|---------|---------|---------|--------|
| EDAD | | < 10 a | No sabe L/E | S/estudios | < 5º EGB | G.Esc | ESO/EGB | FP1 | Bach/FP2 | FP2 Mtria | BUP sup. | O.T.Med | Dipl E.Univ | Ing.Tec | Ing.Sup | Tit.Sup | Doctor |
| | 350.848 | 8.803 | 17.384 | 80.688 | 7.363 | 60.899 | 34.271 | 9.479 | 49.331 | 9.620 | 17.728 | 1.118 | 9.916 | 1.752 | 29.857 | 2.846 | 9.793 |
| 0 | 12.965 | 2.682 | 3.534 | 6.747 | 0 | 0 | 1 | 0 | 0 | 0 | 0 | 1 | 0 | 0 | 0 | 0 | 0 |
| 5 | 16.274 | 3.619 | 5.483 | 7.108 | 54 | 4 | 4 | 0 | 1 | 0 | 0 | 0 | 0 | 0 | 1 | 0 | 0 |
| 10 | 19.049 | 2.040 | 6.458 | 9.415 | 763 | 158 | 214 | 0 | 1 | 0 | 0 | 0 | 0 | 0 | 0 | 0 | 0 |
| 15 | 18.753 | 400 | 1.184 | 6.258 | 459 | 421 | 7.537 | 142 | 148 | 14 | 2.181 | 2 | 3 | 0 | 1 | 3 | 0 |
| 20 | 18.024 | 56 | 389 | 2.603 | 361 | 557 | 4.391 | 930 | 1.099 | 1.350 | 4.345 | 32 | 49 | 4 | 1.598 | 79 | 181 |
| 25 | 18.858 | 0 | 247 | 2.160 | 426 | 965 | 3.495 | 1.150 | 1.258 | 1.388 | 1.632 | 107 | 184 | 13 | 3.955 | 322 | 1.556 |
| 30 | 20.656 | 0 | 14 | 2.820 | 352 | 1.679 | 3.327 | 1.453 | 1.536 | 1.282 | 1.191 | 140 | 976 | 135 | 3.486 | 421 | 1.844 |
| 35 | 23.463 | 3 | 9 | 3.332 | 454 | 2.759 | 3.315 | 1.233 | 2.060 | 1.299 | 1.412 | 199 | 1.616 | 278 | 3.362 | 471 | 1.661 |
| 40 | 28.350 | 2 | 9 | 3.100 | 909 | 4.745 | 3.530 | 1.312 | 3.045 | 1.354 | 1.903 | 167 | 1.789 | 375 | 4.302 | 420 | 1.388 |
| 45 | 29.765 | 0 | 13 | 2.290 | 856 | 7.050 | 3.122 | 1.051 | 4.941 | 1.201 | 1.569 | 120 | 1.661 | 325 | 4.218 | 336 | 1.012 |
| 50 | 28.031 | 0 | 4 | 2.185 | 790 | 7.593 | 2.375 | 829 | 6.425 | 711 | 1.286 | 82 | 1.337 | 204 | 3.245 | 232 | 733 |
| 55 | 25.726 | 0 | 13 | 2.868 | 481 | 8.383 | 950 | 576 | 7.133 | 515 | 909 | 75 | 741 | 120 | 2.299 | 155 | 508 |
| 60 | 22.373 | 0 | 7 | 3.621 | 332 | 7.136 | 672 | 344 | 6.781 | 236 | 523 | 71 | 551 | 94 | 1.450 | 125 | 430 |
| 65 | 18.976 | 0 | 3 | 4.506 | 265 | 5.794 | 552 | 215 | 5.397 | 119 | 344 | 51 | 398 | 54 | 877 | 129 | 272 |
| 70 | 16.549 | 0 | 4 | 5.322 | 214 | 5.186 | 390 | 139 | 3.906 | 68 | 197 | 28 | 291 | 59 | 544 | 80 | 121 |
| 75 | 13.390 | 0 | 2 | 5.436 | 211 | 4.031 | 236 | 54 | 2.583 | 52 | 134 | 27 | 172 | 54 | 309 | 35 | 54 |
| 80 | 9.239 | 0 | 7 | 4.633 | 187 | 2.379 | 80 | 34 | 1.541 | 22 | 60 | 11 | 84 | 26 | 130 | 22 | 23 |
| 85 | 6.385 | 1 | 1 | 3.732 | 166 | 1.328 | 50 | 13 | 928 | 6 | 32 | 2 | 45 | 8 | 58 | 8 | 7 |
| 90 | 2.973 | 0 | 2 | 1.858 | 57 | 553 | 22 | 4 | 421 | 3 | 9 | 2 | 15 | 2 | 19 | 5 | 1 |
| 95 | 821 | 0 | 0 | 554 | 22 | 137 | 8 | 0 | 87 | 0 | 0 | 1 | 4 | 1 | 2 | 3 | 2 |
| 100 | 155 | 0 | 1 | 87 | 4 | 30 | 0 | 0 | 32 | 0 | 1 | 0 | 0 | 0 | 0 | 0 | 0 |
| 105 | 51 | 0 | 0 | 37 | 0 | 8 | 0 | 0 | 5 | 0 | 0 | 0 | 0 | 0 | 1 | 0 | 0 |
| 110 | 20 | 0 | 0 | 16 | 0 | 2 | 0 | 0 | 2 | 0 | 0 | 0 | 0 | 0 | 0 | 0 | 0 |
| 115 | 2 | 0 | 0 | 0 | 0 | 1 | 0 | 0 | 1 | 0 | 0 | 0 | 0 | 0 | 0 | 0 | 0 |

| Porcentajes de población por edad y nivel de estudios | | | | | | | | | | | | | | | | | |
|---|--------|--------|-------------|------------|----------|-------|---------|------|----------|-----------|----------|---------|-------------|---------|---------|---------|--------|
| EDAD | | < 10 a | No sabe L/E | S/estudios | < 5º EGB | G.Esc | ESO/EGB | FP1 | Bach/FP2 | FP2 Mtria | BUP sup. | O.T.Med | Dipl E.Univ | Ing.Tec | Ing.Sup | Tit.Sup | Doctor |
| | 100,0% | 2,5% | 5,0% | 23,0% | 2,1% | 17,4% | 9,8% | 2,7% | 14,1% | 2,7% | 5,1% | 0,3% | 2,8% | 0,5% | 8,5% | 0,8% | 2,8% |
| 0 | 3,7% | 0,8% | 1,0% | 1,9% | 0,0% | 0,0% | 0,0% | 0,0% | 0,0% | 0,0% | 0,0% | 0,0% | 0,0% | 0,0% | 0,0% | 0,0% | 0,0% |
| 5 | 4,6% | 1,0% | 1,6% | 2,0% | 0,0% | 0,0% | 0,0% | 0,0% | 0,0% | 0,0% | 0,0% | 0,0% | 0,0% | 0,0% | 0,0% | 0,0% | 0,0% |
| 10 | 5,4% | 0,6% | 1,8% | 2,7% | 0,2% | 0,0% | 0,1% | 0,0% | 0,0% | 0,0% | 0,0% | 0,0% | 0,0% | 0,0% | 0,0% | 0,0% | 0,0% |
| 15 | 5,3% | 0,1% | 0,3% | 1,8% | 0,1% | 0,1% | 2,1% | 0,0% | 0,0% | 0,0% | 0,6% | 0,0% | 0,0% | 0,0% | 0,0% | 0,0% | 0,0% |
| 20 | 5,1% | 0,0% | 0,1% | 0,7% | 0,1% | 0,2% | 1,3% | 0,3% | 0,3% | 0,4% | 1,2% | 0,0% | 0,0% | 0,0% | 0,5% | 0,0% | 0,1% |
| 25 | 5,4% | 0,0% | 0,1% | 0,6% | 0,1% | 0,3% | 1,0% | 0,3% | 0,4% | 0,4% | 0,5% | 0,0% | 0,1% | 0,0% | 1,1% | 0,1% | 0,4% |
| 30 | 5,9% | 0,0% | 0,0% | 0,8% | 0,1% | 0,5% | 0,9% | 0,4% | 0,4% | 0,4% | 0,3% | 0,0% | 0,3% | 0,0% | 1,0% | 0,1% | 0,5% |
| 35 | 6,7% | 0,0% | 0,0% | 0,9% | 0,1% | 0,8% | 0,9% | 0,4% | 0,6% | 0,4% | 0,4% | 0,1% | 0,5% | 0,1% | 1,0% | 0,1% | 0,5% |
| 40 | 8,1% | 0,0% | 0,0% | 0,9% | 0,3% | 1,4% | 1,0% | 0,4% | 0,9% | 0,4% | 0,5% | 0,0% | 0,5% | 0,1% | 1,2% | 0,1% | 0,4% |
| 45 | 8,5% | 0,0% | 0,0% | 0,7% | 0,2% | 2,0% | 0,9% | 0,3% | 1,4% | 0,3% | 0,4% | 0,0% | 0,5% | 0,1% | 1,2% | 0,1% | 0,3% |
| 50 | 8,0% | 0,0% | 0,0% | 0,6% | 0,2% | 2,2% | 0,7% | 0,2% | 1,8% | 0,2% | 0,4% | 0,0% | 0,4% | 0,1% | 0,9% | 0,1% | 0,2% |
| 55 | 7,3% | 0,0% | 0,0% | 0,8% | 0,1% | 2,4% | 0,3% | 0,2% | 2,0% | 0,1% | 0,3% | 0,0% | 0,2% | 0,0% | 0,7% | 0,0% | 0,1% |
| 60 | 6,4% | 0,0% | 0,0% | 1,0% | 0,1% | 2,0% | 0,2% | 0,1% | 1,9% | 0,1% | 0,1% | 0,0% | 0,2% | 0,0% | 0,4% | 0,0% | 0,1% |
| 65 | 5,4% | 0,0% | 0,0% | 1,3% | 0,1% | 1,7% | 0,2% | 0,1% | 1,5% | 0,0% | 0,1% | 0,0% | 0,1% | 0,0% | 0,2% | 0,0% | 0,1% |
| 70 | 4,7% | 0,0% | 0,0% | 1,5% | 0,1% | 1,5% | 0,1% | 0,0% | 1,1% | 0,0% | 0,1% | 0,0% | 0,1% | 0,0% | 0,2% | 0,0% | 0,0% |
| 75 | 3,8% | 0,0% | 0,0% | 1,5% | 0,1% | 1,1% | 0,1% | 0,0% | 0,7% | 0,0% | 0,0% | 0,0% | 0,0% | 0,0% | 0,1% | 0,0% | 0,0% |
| 80 | 2,6% | 0,0% | 0,0% | 1,3% | 0,1% | 0,7% | 0,0% | 0,0% | 0,4% | 0,0% | 0,0% | 0,0% | 0,0% | 0,0% | 0,0% | 0,0% | 0,0% |
| 85 | 1,8% | 0,0% | 0,0% | 1,1% | 0,0% | 0,4% | 0,0% | 0,0% | 0,3% | 0,0% | 0,0% | 0,0% | 0,0% | 0,0% | 0,0% | 0,0% | 0,0% |
| 90 | 0,8% | 0,0% | 0,0% | 0,5% | 0,0% | 0,2% | 0,0% | 0,0% | 0,1% | 0,0% | 0,0% | 0,0% | 0,0% | 0,0% | 0,0% | 0,0% | 0,0% |
| 95 | 0,2% | 0,0% | 0,0% | 0,2% | 0,0% | 0,0% | 0,0% | 0,0% | 0,0% | 0,0% | 0,0% | 0,0% | 0,0% | 0,0% | 0,0% | 0,0% | 0,0% |
| 100 | 0,0% | 0,0% | 0,0% | 0,0% | 0,0% | 0,0% | 0,0% | 0,0% | 0,0% | 0,0% | 0,0% | 0,0% | 0,0% | 0,0% | 0,0% | 0,0% | 0,0% |
| 105 | 0,0% | 0,0% | 0,0% | 0,0% | 0,0% | 0,0% | 0,0% | 0,0% | 0,0% | 0,0% | 0,0% | 0,0% | 0,0% | 0,0% | 0,0% | 0,0% | 0,0% |
| 110 | 0,0% | 0,0% | 0,0% | 0,0% | 0,0% | 0,0% | 0,0% | 0,0% | 0,0% | 0,0% | 0,0% | 0,0% | 0,0% | 0,0% | 0,0% | 0,0% | 0,0% |
| 115 | 0,0% | 0,0% | 0,0% | 0,0% | 0,0% | 0,0% | 0,0% | 0,0% | 0,0% | 0,0% | 0,0% | 0,0% | 0,0% | 0,0% | 0,0% | 0,0% | 0,0% |

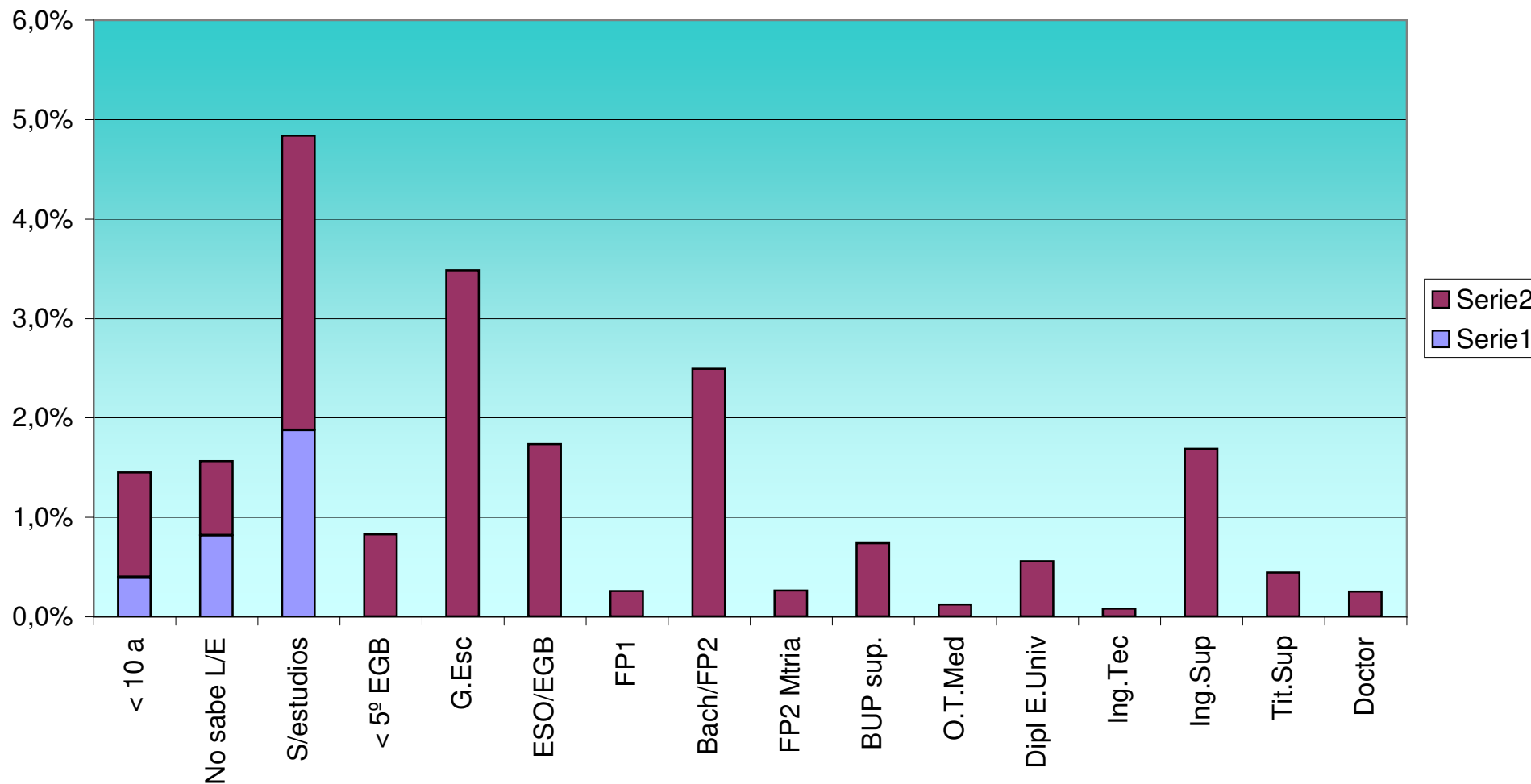
Grupos de edad (Españoles vs Extranjeros)



| Totales de población por edad y nivel de estudios (Españoles) | | | | | | | | | | | | | | | | | |
|---|--------|--------|-------------|------------|----------|-------|---------|-------|----------|-----------|----------|---------|-------------|---------|---------|---------|--------|
| EDAD | | < 10 a | No sabe L/E | S/estudios | < 5º EGB | G.Esc | ESO/EGB | FP1 | Bach/FP2 | FP2 Mtria | BUP sup. | O.T.Med | Dipl E.Univ | Ing.Tec | Ing.Sup | Tit.Sup | Doctor |
| | 10.865 | 1.407 | 2.871 | 6.583 | 1 | 1 | 1 | 0 | 0 | 0 | 0 | 0 | 0 | 0 | 1 | 0 | 0 |
| 0 | 10.551 | 1.745 | 2.387 | 6.418 | 0 | 0 | 1 | 0 | 0 | 0 | 0 | 0 | 0 | 0 | 0 | 0 | 0 |
| 5 | 13.068 | 1.763 | 4.744 | 6.527 | 30 | 2 | 1 | 0 | 0 | 0 | 0 | 0 | 0 | 0 | 1 | 0 | 0 |
| 10 | 15.848 | 1.216 | 5.849 | 8.224 | 379 | 71 | 109 | 0 | 0 | 0 | 0 | 0 | 0 | 0 | 0 | 0 | 0 |
| 15 | 15.923 | 339 | 1.128 | 5.137 | 234 | 134 | 6.671 | 134 | 55 | 14 | 2.076 | 1 | 0 | 0 | 0 | 0 | 0 |
| 20 | 14.481 | 55 | 377 | 1.927 | 206 | 186 | 3.551 | 845 | 381 | 1.280 | 3.999 | 13 | 10 | 1 | 1.454 | 22 | 174 |
| 25 | 13.965 | 0 | 241 | 1.518 | 241 | 323 | 2.691 | 1.014 | 346 | 1.251 | 1.334 | 45 | 34 | 3 | 3.353 | 119 | 1.452 |
| 30 | 14.760 | 0 | 10 | 2.071 | 172 | 689 | 2.564 | 1.274 | 514 | 1.151 | 919 | 81 | 727 | 104 | 2.638 | 159 | 1.687 |
| 35 | 16.724 | 1 | 2 | 2.477 | 251 | 1.288 | 2.692 | 1.121 | 943 | 1.152 | 1.074 | 116 | 1.287 | 236 | 2.403 | 216 | 1.465 |
| 40 | 21.316 | 0 | 2 | 2.178 | 558 | 2.922 | 3.003 | 1.212 | 1.926 | 1.239 | 1.576 | 119 | 1.474 | 330 | 3.326 | 211 | 1.240 |
| 45 | 23.728 | 0 | 6 | 1.437 | 547 | 5.411 | 2.655 | 958 | 3.973 | 1.098 | 1.300 | 80 | 1.403 | 284 | 3.489 | 157 | 930 |
| 50 | 23.096 | 0 | 3 | 1.512 | 493 | 6.142 | 2.022 | 758 | 5.601 | 634 | 1.071 | 52 | 1.124 | 177 | 2.721 | 117 | 669 |
| 55 | 22.173 | 0 | 4 | 2.352 | 267 | 7.336 | 717 | 531 | 6.544 | 457 | 759 | 37 | 615 | 99 | 1.907 | 71 | 477 |
| 60 | 19.696 | 0 | 4 | 3.225 | 196 | 6.338 | 485 | 315 | 6.310 | 199 | 435 | 49 | 453 | 74 | 1.163 | 60 | 390 |
| 65 | 16.955 | 0 | 1 | 4.179 | 168 | 5.218 | 392 | 193 | 5.056 | 96 | 260 | 37 | 328 | 43 | 675 | 63 | 246 |
| 70 | 15.131 | 0 | 0 | 5.109 | 158 | 4.776 | 298 | 122 | 3.640 | 52 | 142 | 25 | 229 | 48 | 389 | 43 | 100 |
| 75 | 12.577 | 0 | 2 | 5.302 | 177 | 3.762 | 189 | 48 | 2.444 | 42 | 107 | 22 | 140 | 40 | 231 | 22 | 49 |
| 80 | 8.698 | 0 | 3 | 4.517 | 160 | 2.182 | 63 | 32 | 1.443 | 18 | 45 | 7 | 68 | 22 | 101 | 19 | 18 |
| 85 | 6.118 | 0 | 1 | 3.678 | 145 | 1.222 | 40 | 12 | 887 | 3 | 22 | 0 | 40 | 6 | 50 | 5 | 7 |
| 90 | 2.859 | 0 | 2 | 1.826 | 55 | 511 | 20 | 3 | 399 | 1 | 6 | 1 | 11 | 1 | 18 | 4 | 1 |
| 95 | 776 | 0 | 0 | 538 | 19 | 122 | 6 | 0 | 83 | 0 | 0 | 1 | 2 | 0 | 2 | 2 | 1 |
| 100 | 142 | 0 | 1 | 83 | 2 | 25 | 0 | 0 | 31 | 0 | 0 | 0 | 0 | 0 | 0 | 0 | 0 |
| 105 | 50 | 0 | 0 | 37 | 0 | 7 | 0 | 0 | 5 | 0 | 0 | 0 | 0 | 0 | 1 | 0 | 0 |
| 110 | 18 | 0 | 0 | 15 | 0 | 1 | 0 | 0 | 2 | 0 | 0 | 0 | 0 | 0 | 0 | 0 | 0 |
| 115 | 0 | 0 | 0 | 0 | 0 | 0 | 0 | 0 | 0 | 0 | 0 | 0 | 0 | 0 | 0 | 0 | 0 |

| Porcentajes de población por edad y nivel de estudios (Españoles) | | | | | | | | | | | | | | | | | |
|---|------|--------|-------------|------------|----------|-------|---------|------|----------|-----------|----------|---------|-------------|---------|---------|---------|--------|
| EDAD | | < 10 a | No sabe L/E | S/estudios | < 5º EGB | G.Esc | ESO/EGB | FP1 | Bach/FP2 | FP2 Mtria | BUP sup. | O.T.Med | Dipl E.Univ | Ing.Tec | Ing.Sup | Tit.Sup | Doctor |
| | 3,1% | 0,4% | 0,8% | 1,9% | 0,0% | 0,0% | 0,0% | 0,0% | 0,0% | 0,0% | 0,0% | 0,0% | 0,0% | 0,0% | 0,0% | 0,0% | 0,0% |
| 0 | 3,0% | 0,5% | 0,7% | 1,8% | 0,0% | 0,0% | 0,0% | 0,0% | 0,0% | 0,0% | 0,0% | 0,0% | 0,0% | 0,0% | 0,0% | 0,0% | 0,0% |
| 5 | 3,7% | 0,5% | 1,4% | 1,9% | 0,0% | 0,0% | 0,0% | 0,0% | 0,0% | 0,0% | 0,0% | 0,0% | 0,0% | 0,0% | 0,0% | 0,0% | 0,0% |
| 10 | 4,5% | 0,3% | 1,7% | 2,3% | 0,1% | 0,0% | 0,0% | 0,0% | 0,0% | 0,0% | 0,0% | 0,0% | 0,0% | 0,0% | 0,0% | 0,0% | 0,0% |
| 15 | 4,5% | 0,1% | 0,3% | 1,5% | 0,1% | 0,0% | 1,9% | 0,0% | 0,0% | 0,0% | 0,6% | 0,0% | 0,0% | 0,0% | 0,0% | 0,0% | 0,0% |
| 20 | 4,1% | 0,0% | 0,1% | 0,5% | 0,1% | 0,1% | 1,0% | 0,2% | 0,1% | 0,4% | 1,1% | 0,0% | 0,0% | 0,0% | 0,4% | 0,0% | 0,0% |
| 25 | 4,0% | 0,0% | 0,1% | 0,4% | 0,1% | 0,1% | 0,8% | 0,3% | 0,1% | 0,4% | 0,4% | 0,0% | 0,0% | 0,0% | 1,0% | 0,0% | 0,4% |
| 30 | 4,2% | 0,0% | 0,0% | 0,6% | 0,0% | 0,2% | 0,7% | 0,4% | 0,1% | 0,3% | 0,3% | 0,0% | 0,2% | 0,0% | 0,8% | 0,0% | 0,5% |
| 35 | 4,8% | 0,0% | 0,0% | 0,7% | 0,1% | 0,4% | 0,8% | 0,3% | 0,3% | 0,3% | 0,3% | 0,0% | 0,4% | 0,1% | 0,7% | 0,1% | 0,4% |
| 40 | 6,1% | 0,0% | 0,0% | 0,6% | 0,2% | 0,8% | 0,9% | 0,3% | 0,5% | 0,4% | 0,4% | 0,0% | 0,4% | 0,1% | 0,9% | 0,1% | 0,4% |
| 45 | 6,8% | 0,0% | 0,0% | 0,4% | 0,2% | 1,5% | 0,8% | 0,3% | 1,1% | 0,3% | 0,4% | 0,0% | 0,4% | 0,1% | 1,0% | 0,0% | 0,3% |
| 50 | 6,6% | 0,0% | 0,0% | 0,4% | 0,1% | 1,8% | 0,6% | 0,2% | 1,6% | 0,2% | 0,3% | 0,0% | 0,3% | 0,1% | 0,8% | 0,0% | 0,2% |
| 55 | 6,3% | 0,0% | 0,0% | 0,7% | 0,1% | 2,1% | 0,2% | 0,2% | 1,9% | 0,1% | 0,2% | 0,0% | 0,2% | 0,0% | 0,5% | 0,0% | 0,1% |
| 60 | 5,6% | 0,0% | 0,0% | 0,9% | 0,1% | 1,8% | 0,1% | 0,1% | 1,8% | 0,1% | 0,1% | 0,0% | 0,1% | 0,0% | 0,3% | 0,0% | 0,1% |
| 65 | 4,8% | 0,0% | 0,0% | 1,2% | 0,0% | 1,5% | 0,1% | 0,1% | 1,4% | 0,0% | 0,1% | 0,0% | 0,1% | 0,0% | 0,2% | 0,0% | 0,1% |
| 70 | 4,3% | 0,0% | 0,0% | 1,5% | 0,0% | 1,4% | 0,1% | 0,0% | 1,0% | 0,0% | 0,0% | 0,0% | 0,1% | 0,0% | 0,1% | 0,0% | 0,0% |
| 75 | 3,6% | 0,0% | 0,0% | 1,5% | 0,1% | 1,1% | 0,1% | 0,0% | 0,7% | 0,0% | 0,0% | 0,0% | 0,0% | 0,0% | 0,1% | 0,0% | 0,0% |
| 80 | 2,5% | 0,0% | 0,0% | 1,3% | 0,0% | 0,6% | 0,0% | 0,0% | 0,4% | 0,0% | 0,0% | 0,0% | 0,0% | 0,0% | 0,0% | 0,0% | 0,0% |
| 85 | 1,7% | 0,0% | 0,0% | 1,0% | 0,0% | 0,3% | 0,0% | 0,0% | 0,3% | 0,0% | 0,0% | 0,0% | 0,0% | 0,0% | 0,0% | 0,0% | 0,0% |
| 90 | 0,8% | 0,0% | 0,0% | 0,5% | 0,0% | 0,1% | 0,0% | 0,0% | 0,1% | 0,0% | 0,0% | 0,0% | 0,0% | 0,0% | 0,0% | 0,0% | 0,0% |
| 95 | 0,2% | 0,0% | 0,0% | 0,2% | 0,0% | 0,0% | 0,0% | 0,0% | 0,0% | 0,0% | 0,0% | 0,0% | 0,0% | 0,0% | 0,0% | 0,0% | 0,0% |
| 100 | 0,0% | 0,0% | 0,0% | 0,0% | 0,0% | 0,0% | 0,0% | 0,0% | 0,0% | 0,0% | 0,0% | 0,0% | 0,0% | 0,0% | 0,0% | 0,0% | 0,0% |
| 105 | 0,0% | 0,0% | 0,0% | 0,0% | 0,0% | 0,0% | 0,0% | 0,0% | 0,0% | 0,0% | 0,0% | 0,0% | 0,0% | 0,0% | 0,0% | 0,0% | 0,0% |
| 110 | 0,0% | 0,0% | 0,0% | 0,0% | 0,0% | 0,0% | 0,0% | 0,0% | 0,0% | 0,0% | 0,0% | 0,0% | 0,0% | 0,0% | 0,0% | 0,0% | 0,0% |
| 115 | 0,0% | 0,0% | 0,0% | 0,0% | 0,0% | 0,0% | 0,0% | 0,0% | 0,0% | 0,0% | 0,0% | 0,0% | 0,0% | 0,0% | 0,0% | 0,0% | 0,0% |

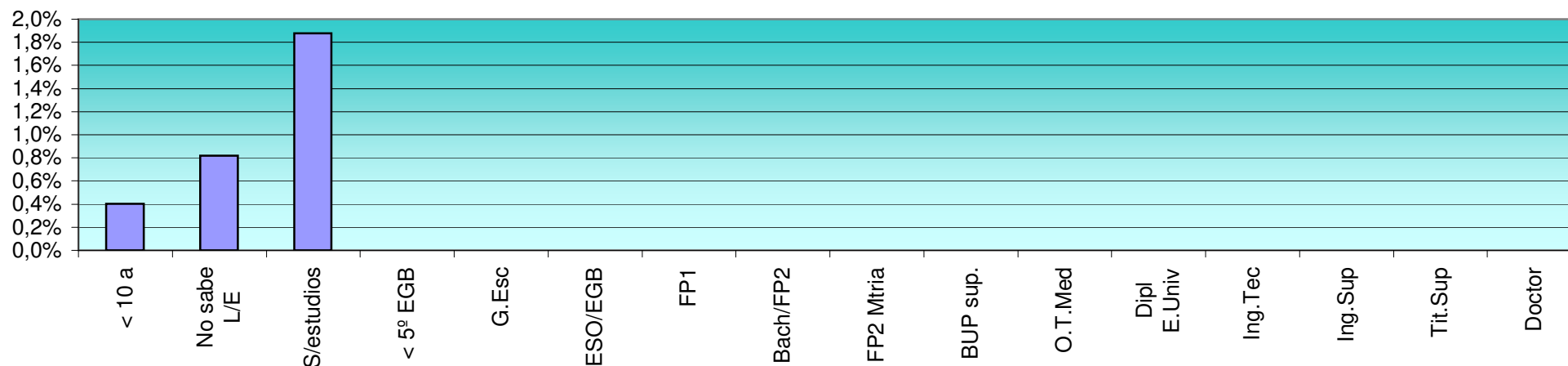
Nivel de estudios (Españoles vs Extranjeros)



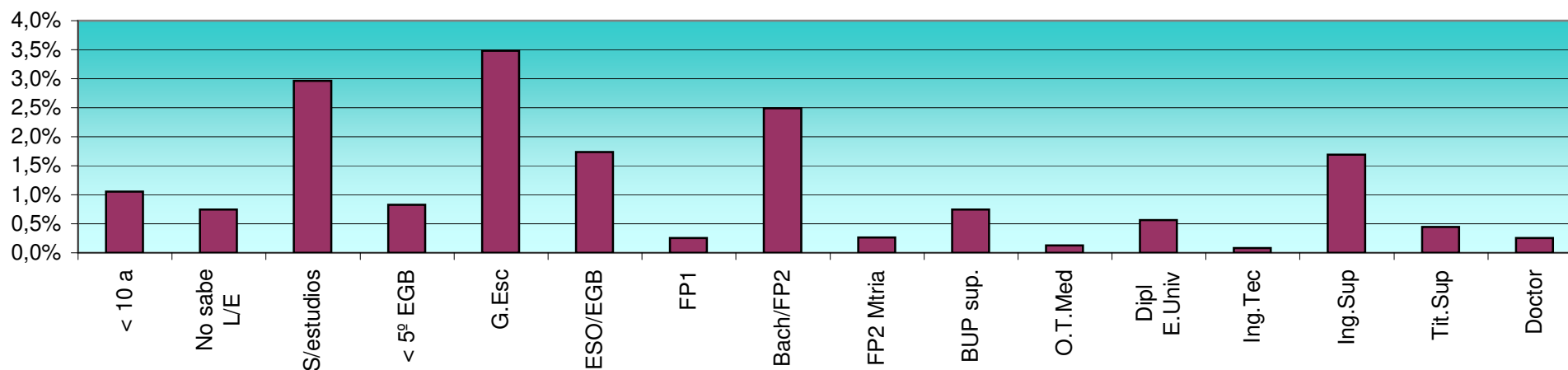
| Totales de población por edad y nivel de estudios (Extranjeros) | | | | | | | | | | | | | | | | | |
|---|---------------|--------|-------------|------------|----------|--------|---------|-----|----------|-----------|----------|---------|-------------|---------|---------|---------|--------|
| EDAD | | < 10 a | No sabe L/E | S/estudios | < 5º EGB | G.Esc | ESO/EGB | FP1 | Bach/FP2 | FP2 Mtria | BUP sup. | O.T.Med | Dipl E.Univ | Ing.Tec | Ing.Sup | Tit.Sup | Doctor |
| | 62.195 | 3.684 | 2.617 | 10.401 | 2.905 | 12.231 | 6.101 | 907 | 8.748 | 933 | 2.603 | 432 | 1.971 | 284 | 5.935 | 1.556 | 887 |
| 0 | 2.414 | 937 | 1.147 | 329 | 0 | 0 | 0 | 0 | 0 | 0 | 0 | 1 | 0 | 0 | 0 | 0 | 0 |
| 5 | 3.206 | 1.856 | 739 | 581 | 24 | 2 | 3 | 0 | 1 | 0 | 0 | 0 | 0 | 0 | 0 | 0 | 0 |
| 10 | 3.201 | 824 | 609 | 1.191 | 384 | 87 | 105 | 0 | 1 | 0 | 0 | 0 | 0 | 0 | 0 | 0 | 0 |
| 15 | 2.830 | 61 | 56 | 1.121 | 225 | 287 | 866 | 8 | 93 | 0 | 105 | 1 | 3 | 0 | 1 | 3 | 0 |
| 20 | 3.543 | 1 | 12 | 676 | 155 | 371 | 840 | 85 | 718 | 70 | 346 | 19 | 39 | 3 | 144 | 57 | 7 |
| 25 | 4.893 | 0 | 6 | 642 | 185 | 642 | 804 | 136 | 912 | 137 | 298 | 62 | 150 | 10 | 602 | 203 | 104 |
| 30 | 5.896 | 0 | 4 | 749 | 180 | 990 | 763 | 179 | 1.022 | 131 | 272 | 59 | 249 | 31 | 848 | 262 | 157 |
| 35 | 6.739 | 2 | 7 | 855 | 203 | 1.471 | 623 | 112 | 1.117 | 147 | 338 | 83 | 329 | 42 | 959 | 255 | 196 |
| 40 | 7.034 | 2 | 7 | 922 | 351 | 1.823 | 527 | 100 | 1.119 | 115 | 327 | 48 | 315 | 45 | 976 | 209 | 148 |
| 45 | 6.037 | 0 | 7 | 853 | 309 | 1.639 | 467 | 93 | 968 | 103 | 269 | 40 | 258 | 41 | 729 | 179 | 82 |
| 50 | 4.935 | 0 | 1 | 673 | 297 | 1.451 | 353 | 71 | 824 | 77 | 215 | 30 | 213 | 27 | 524 | 115 | 64 |
| 55 | 3.553 | 0 | 9 | 516 | 214 | 1.047 | 233 | 45 | 589 | 58 | 150 | 38 | 126 | 21 | 392 | 84 | 31 |
| 60 | 2.677 | 0 | 3 | 396 | 136 | 798 | 187 | 29 | 471 | 37 | 88 | 22 | 98 | 20 | 287 | 65 | 40 |
| 65 | 2.021 | 0 | 2 | 327 | 97 | 576 | 160 | 22 | 341 | 23 | 84 | 14 | 70 | 11 | 202 | 66 | 26 |
| 70 | 1.418 | 0 | 4 | 213 | 56 | 410 | 92 | 17 | 266 | 16 | 55 | 3 | 62 | 11 | 155 | 37 | 21 |
| 75 | 813 | 0 | 0 | 134 | 34 | 269 | 47 | 6 | 139 | 10 | 27 | 5 | 32 | 14 | 78 | 13 | 5 |
| 80 | 541 | 0 | 4 | 116 | 27 | 197 | 17 | 2 | 98 | 4 | 15 | 4 | 16 | 4 | 29 | 3 | 5 |
| 85 | 267 | 1 | 0 | 54 | 21 | 106 | 10 | 1 | 41 | 3 | 10 | 2 | 5 | 2 | 8 | 3 | 0 |
| 90 | 114 | 0 | 0 | 32 | 2 | 42 | 2 | 1 | 22 | 2 | 3 | 1 | 4 | 1 | 1 | 1 | 0 |
| 95 | 45 | 0 | 0 | 16 | 3 | 15 | 2 | 0 | 4 | 0 | 0 | 0 | 2 | 1 | 0 | 1 | 1 |
| 100 | 13 | 0 | 0 | 4 | 2 | 5 | 0 | 0 | 1 | 0 | 1 | 0 | 0 | 0 | 0 | 0 | 0 |
| 105 | 1 | 0 | 0 | 0 | 0 | 1 | 0 | 0 | 0 | 0 | 0 | 0 | 0 | 0 | 0 | 0 | 0 |
| 110 | 2 | 0 | 0 | 1 | 0 | 1 | 0 | 0 | 0 | 0 | 0 | 0 | 0 | 0 | 0 | 0 | 0 |
| 115 | 2 | 0 | 0 | 0 | 0 | 1 | 0 | 0 | 1 | 0 | 0 | 0 | 0 | 0 | 0 | 0 | 0 |

| Porcentajes de población por edad y nivel de estudios (Extranjeros) | | | | | | | | | | | | | | | | | |
|---|-------|--------|-------------|------------|----------|-------|---------|------|----------|-----------|----------|---------|-------------|---------|---------|---------|--------|
| EDAD | | < 10 a | No sabe L/E | S/estudios | < 5º EGB | G.Esc | ESO/EGB | FP1 | Bach/FP2 | FP2 Mtria | BUP sup. | O.T.Med | Dipl E.Univ | Ing.Tec | Ing.Sup | Tit.Sup | Doctor |
| | 17,7% | 1,1% | 0,7% | 3,0% | 0,8% | 3,5% | 1,7% | 0,3% | 2,5% | 0,3% | 0,7% | 0,1% | 0,6% | 0,1% | 1,7% | 0,4% | 0,3% |
| 0 | 0,7% | 0,3% | 0,3% | 0,1% | 0,0% | 0,0% | 0,0% | 0,0% | 0,0% | 0,0% | 0,0% | 0,0% | 0,0% | 0,0% | 0,0% | 0,0% | 0,0% |
| 5 | 0,9% | 0,5% | 0,2% | 0,2% | 0,0% | 0,0% | 0,0% | 0,0% | 0,0% | 0,0% | 0,0% | 0,0% | 0,0% | 0,0% | 0,0% | 0,0% | 0,0% |
| 10 | 0,9% | 0,2% | 0,2% | 0,3% | 0,1% | 0,0% | 0,0% | 0,0% | 0,0% | 0,0% | 0,0% | 0,0% | 0,0% | 0,0% | 0,0% | 0,0% | 0,0% |
| 15 | 0,8% | 0,0% | 0,0% | 0,3% | 0,1% | 0,1% | 0,2% | 0,0% | 0,0% | 0,0% | 0,0% | 0,0% | 0,0% | 0,0% | 0,0% | 0,0% | 0,0% |
| 20 | 1,0% | 0,0% | 0,0% | 0,2% | 0,0% | 0,1% | 0,2% | 0,0% | 0,2% | 0,0% | 0,1% | 0,0% | 0,0% | 0,0% | 0,0% | 0,0% | 0,0% |
| 25 | 1,4% | 0,0% | 0,0% | 0,2% | 0,1% | 0,2% | 0,2% | 0,0% | 0,3% | 0,0% | 0,1% | 0,0% | 0,0% | 0,0% | 0,2% | 0,1% | 0,0% |
| 30 | 1,7% | 0,0% | 0,0% | 0,2% | 0,1% | 0,3% | 0,2% | 0,1% | 0,3% | 0,0% | 0,1% | 0,0% | 0,1% | 0,0% | 0,2% | 0,1% | 0,0% |
| 35 | 1,9% | 0,0% | 0,0% | 0,2% | 0,1% | 0,4% | 0,2% | 0,0% | 0,3% | 0,0% | 0,1% | 0,0% | 0,1% | 0,0% | 0,3% | 0,1% | 0,1% |
| 40 | 2,0% | 0,0% | 0,0% | 0,3% | 0,1% | 0,5% | 0,2% | 0,0% | 0,3% | 0,0% | 0,1% | 0,0% | 0,1% | 0,0% | 0,3% | 0,1% | 0,0% |
| 45 | 1,7% | 0,0% | 0,0% | 0,2% | 0,1% | 0,5% | 0,1% | 0,0% | 0,3% | 0,0% | 0,1% | 0,0% | 0,1% | 0,0% | 0,2% | 0,1% | 0,0% |
| 50 | 1,4% | 0,0% | 0,0% | 0,2% | 0,1% | 0,4% | 0,1% | 0,0% | 0,2% | 0,0% | 0,1% | 0,0% | 0,1% | 0,0% | 0,1% | 0,0% | 0,0% |
| 55 | 1,0% | 0,0% | 0,0% | 0,1% | 0,1% | 0,3% | 0,1% | 0,0% | 0,2% | 0,0% | 0,0% | 0,0% | 0,0% | 0,0% | 0,1% | 0,0% | 0,0% |
| 60 | 0,8% | 0,0% | 0,0% | 0,1% | 0,0% | 0,2% | 0,1% | 0,0% | 0,1% | 0,0% | 0,0% | 0,0% | 0,0% | 0,0% | 0,1% | 0,0% | 0,0% |
| 65 | 0,6% | 0,0% | 0,0% | 0,1% | 0,0% | 0,2% | 0,0% | 0,0% | 0,1% | 0,0% | 0,0% | 0,0% | 0,0% | 0,0% | 0,1% | 0,0% | 0,0% |
| 70 | 0,4% | 0,0% | 0,0% | 0,1% | 0,0% | 0,1% | 0,0% | 0,0% | 0,1% | 0,0% | 0,0% | 0,0% | 0,0% | 0,0% | 0,0% | 0,0% | 0,0% |
| 75 | 0,2% | 0,0% | 0,0% | 0,0% | 0,0% | 0,1% | 0,0% | 0,0% | 0,0% | 0,0% | 0,0% | 0,0% | 0,0% | 0,0% | 0,0% | 0,0% | 0,0% |
| 80 | 0,2% | 0,0% | 0,0% | 0,0% | 0,0% | 0,1% | 0,0% | 0,0% | 0,0% | 0,0% | 0,0% | 0,0% | 0,0% | 0,0% | 0,0% | 0,0% | 0,0% |
| 85 | 0,1% | 0,0% | 0,0% | 0,0% | 0,0% | 0,0% | 0,0% | 0,0% | 0,0% | 0,0% | 0,0% | 0,0% | 0,0% | 0,0% | 0,0% | 0,0% | 0,0% |
| 90 | 0,0% | 0,0% | 0,0% | 0,0% | 0,0% | 0,0% | 0,0% | 0,0% | 0,0% | 0,0% | 0,0% | 0,0% | 0,0% | 0,0% | 0,0% | 0,0% | 0,0% |
| 95 | 0,0% | 0,0% | 0,0% | 0,0% | 0,0% | 0,0% | 0,0% | 0,0% | 0,0% | 0,0% | 0,0% | 0,0% | 0,0% | 0,0% | 0,0% | 0,0% | 0,0% |
| 100 | 0,0% | 0,0% | 0,0% | 0,0% | 0,0% | 0,0% | 0,0% | 0,0% | 0,0% | 0,0% | 0,0% | 0,0% | 0,0% | 0,0% | 0,0% | 0,0% | 0,0% |
| 105 | 0,0% | 0,0% | 0,0% | 0,0% | 0,0% | 0,0% | 0,0% | 0,0% | 0,0% | 0,0% | 0,0% | 0,0% | 0,0% | 0,0% | 0,0% | 0,0% | 0,0% |
| 110 | 0,0% | 0,0% | 0,0% | 0,0% | 0,0% | 0,0% | 0,0% | 0,0% | 0,0% | 0,0% | 0,0% | 0,0% | 0,0% | 0,0% | 0,0% | 0,0% | 0,0% |
| 115 | 0,0% | 0,0% | 0,0% | 0,0% | 0,0% | 0,0% | 0,0% | 0,0% | 0,0% | 0,0% | 0,0% | 0,0% | 0,0% | 0,0% | 0,0% | 0,0% | 0,0% |

Nivel de estudios de Españoles



Nivel de estudios de Extranjeros



| EDAD | Total | | | < 10 a | | | No sabe L/E | | | S/estudios | | | < 5º EGB | | | G.Esc | | | H |
|------|---------|---------|---------|--------|-------|-------|-------------|-------|--------|------------|--------|--------|----------|-------|-------|--------|--------|--------|--------|
| | H | M | T | H | M | T | H | M | T | H | M | T | H | M | T | H | M | T | |
| 0 | 170.154 | 180.694 | 350.848 | 4.553 | 4.250 | 8.803 | 9.101 | 8.283 | 17.384 | 38.459 | 42.229 | 80.688 | 3.964 | 3.399 | 7.363 | 29.143 | 31.756 | 60.899 | 18.418 |
| 5 | 6.634 | 6.331 | 12.965 | 1.354 | 1.328 | 2.682 | 1.791 | 1.743 | 3.534 | 3.488 | 3.259 | 6.747 | 0 | 0 | 0 | 0 | 0 | 0 | 1 |
| 10 | 8.402 | 7.872 | 16.274 | 1.875 | 1.744 | 3.619 | 2.813 | 2.670 | 5.483 | 3.694 | 3.414 | 7.108 | 17 | 37 | 54 | 2 | 2 | 4 | 1 |
| 15 | 9.898 | 9.151 | 19.049 | 1.057 | 983 | 2.040 | 3.405 | 3.053 | 6.458 | 4.860 | 4.555 | 9.415 | 397 | 366 | 763 | 72 | 86 | 158 | 106 |
| 20 | 9.669 | 9.084 | 18.753 | 228 | 172 | 400 | 653 | 531 | 1.184 | 3.410 | 2.848 | 6.258 | 267 | 192 | 459 | 221 | 200 | 421 | 3.765 |
| 25 | 9.408 | 8.616 | 18.024 | 37 | 19 | 56 | 245 | 144 | 389 | 1.578 | 1.025 | 2.603 | 211 | 150 | 361 | 306 | 251 | 557 | 2.464 |
| 30 | 9.524 | 9.334 | 18.858 | 0 | 0 | 0 | 148 | 99 | 247 | 1.309 | 851 | 2.160 | 240 | 186 | 426 | 511 | 454 | 965 | 2.015 |
| 35 | 10.285 | 10.371 | 20.656 | 0 | 0 | 0 | 11 | 3 | 14 | 1.715 | 1.105 | 2.820 | 219 | 133 | 352 | 873 | 806 | 1.679 | 1.864 |
| 40 | 11.515 | 11.948 | 23.463 | 1 | 2 | 3 | 3 | 6 | 9 | 1.975 | 1.357 | 3.332 | 243 | 211 | 454 | 1.373 | 1.386 | 2.759 | 1.866 |
| 45 | 14.108 | 14.242 | 28.350 | 1 | 1 | 2 | 5 | 4 | 9 | 1.719 | 1.381 | 3.100 | 540 | 369 | 909 | 2.481 | 2.264 | 4.745 | 2.012 |
| 50 | 14.953 | 14.812 | 29.765 | 0 | 0 | 0 | 6 | 7 | 13 | 1.286 | 1.004 | 2.290 | 543 | 313 | 856 | 3.725 | 3.325 | 7.050 | 1.787 |
| 55 | 14.010 | 14.021 | 28.031 | 0 | 0 | 0 | 3 | 1 | 4 | 1.207 | 978 | 2.185 | 468 | 322 | 790 | 3.990 | 3.603 | 7.593 | 1.281 |
| 60 | 12.453 | 13.273 | 25.726 | 0 | 0 | 0 | 11 | 2 | 13 | 1.513 | 1.355 | 2.868 | 258 | 223 | 481 | 4.112 | 4.271 | 8.383 | 466 |
| 65 | 10.470 | 11.903 | 22.373 | 0 | 0 | 0 | 3 | 4 | 7 | 1.601 | 2.020 | 3.621 | 166 | 166 | 332 | 3.308 | 3.828 | 7.136 | 277 |
| 70 | 8.631 | 10.345 | 18.976 | 0 | 0 | 0 | 2 | 1 | 3 | 1.833 | 2.673 | 4.506 | 122 | 143 | 265 | 2.505 | 3.289 | 5.794 | 216 |
| 75 | 7.320 | 9.229 | 16.549 | 0 | 0 | 0 | 0 | 4 | 4 | 2.087 | 3.235 | 5.322 | 72 | 142 | 214 | 2.145 | 3.041 | 5.186 | 147 |
| 80 | 5.694 | 7.696 | 13.390 | 0 | 0 | 0 | 0 | 2 | 2 | 1.927 | 3.509 | 5.436 | 71 | 140 | 211 | 1.748 | 2.283 | 4.031 | 90 |
| 85 | 3.704 | 5.535 | 9.239 | 0 | 0 | 0 | 2 | 5 | 7 | 1.541 | 3.092 | 4.633 | 63 | 124 | 187 | 987 | 1.392 | 2.379 | 28 |
| 90 | 2.340 | 4.045 | 6.385 | 0 | 1 | 1 | 0 | 1 | 1 | 1.132 | 2.600 | 3.732 | 48 | 118 | 166 | 543 | 785 | 1.328 | 20 |
| 95 | 854 | 2.119 | 2.973 | 0 | 0 | 0 | 0 | 2 | 2 | 428 | 1.430 | 1.858 | 12 | 45 | 57 | 185 | 368 | 553 | 8 |
| 100 | 207 | 614 | 821 | 0 | 0 | 0 | 0 | 0 | 0 | 117 | 437 | 554 | 7 | 15 | 22 | 39 | 98 | 137 | 4 |
| 105 | 48 | 107 | 155 | 0 | 0 | 0 | 0 | 1 | 1 | 21 | 66 | 87 | 0 | 4 | 4 | 13 | 17 | 30 | 0 |
| 110 | 21 | 30 | 51 | 0 | 0 | 0 | 0 | 0 | 0 | 15 | 22 | 37 | 0 | 0 | 0 | 3 | 5 | 8 | 0 |
| 115 | 5 | 15 | 20 | 0 | 0 | 0 | 0 | 0 | 0 | 3 | 13 | 16 | 0 | 0 | 0 | 1 | 1 | 2 | 0 |
| 115 | 1 | 1 | 2 | 0 | 0 | 0 | 0 | 0 | 0 | 0 | 0 | 0 | 0 | 0 | 0 | 0 | 1 | 1 | 0 |

| EDAD | ESO/EGB | | FP1 | | | Bach/FP2 | | | FP2 Mtria | | | BUP sup. | | | O.T.Med | | | Dipl E.Univ | | | Ing.Tec | | |
|------|---------|--------|-------|-------|-------|----------|--------|--------|-----------|------|-------|----------|-------|--------|---------|-----|------|-------------|-------|-------|---------|-----|-------|
| | M | T | H | M | T | H | M | T | H | M | T | H | M | T | H | M | T | H | M | T | H | M | T |
| | 15.853 | 34.271 | 4.154 | 5.325 | 9.479 | 23.954 | 25.377 | 49.331 | #### | #### | 9.620 | 8.794 | 8.934 | 17.728 | 406 | 712 | #### | 3.482 | 6.434 | 9.916 | 1.351 | 401 | 1.752 |
| 0 | 0 | 1 | 0 | 0 | 0 | 0 | 0 | 0 | 0 | 0 | 0 | 0 | 0 | 0 | 0 | 1 | 1 | 0 | 0 | 0 | 0 | 0 | 0 |
| 5 | 3 | 4 | 0 | 0 | 0 | 0 | 1 | 1 | 0 | 0 | 0 | 0 | 0 | 0 | 0 | 0 | 0 | 0 | 0 | 0 | 0 | 0 | 0 |
| 10 | 108 | 214 | 0 | 0 | 0 | 1 | 0 | 1 | 0 | 0 | 0 | 0 | 0 | 0 | 0 | 0 | 0 | 0 | 0 | 0 | 0 | 0 | 0 |
| 15 | 3.772 | 7.537 | 63 | 79 | 142 | 66 | 82 | 148 | 6 | 8 | 14 | 989 | 1.192 | 2.181 | 1 | 1 | 2 | 0 | 3 | 3 | 0 | 0 | 0 |
| 20 | 1.927 | 4.391 | 495 | 435 | 930 | 511 | 588 | 1.099 | 751 | 599 | 1.350 | 2.083 | 2.262 | 4.345 | 13 | 19 | 32 | 19 | 30 | 49 | 2 | 2 | 4 |
| 25 | 1.480 | 3.495 | 568 | 582 | 1.150 | 588 | 670 | 1.258 | 808 | 580 | 1.388 | 893 | 739 | 1.632 | 45 | 62 | 107 | 68 | 116 | 184 | 7 | 6 | 13 |
| 30 | 1.463 | 3.327 | 674 | 779 | 1.453 | 728 | 808 | 1.536 | 701 | 581 | 1.282 | 657 | 534 | 1.191 | 56 | 84 | 140 | 267 | 709 | 976 | 103 | 32 | 135 |
| 35 | 1.449 | 3.315 | 557 | 676 | 1.233 | 1.024 | 1.036 | 2.060 | 733 | 566 | 1.299 | 701 | 711 | 1.412 | 74 | 125 | 199 | 503 | 1.113 | 1.616 | 202 | 76 | 278 |
| 40 | 1.518 | 3.530 | 565 | 747 | 1.312 | 1.492 | 1.553 | 3.045 | 699 | 655 | 1.354 | 964 | 939 | 1.903 | 53 | 114 | 167 | 586 | 1.203 | 1.789 | 272 | 103 | 375 |
| 45 | 1.335 | 3.122 | 476 | 575 | 1.051 | 2.321 | 2.620 | 4.941 | 587 | 614 | 1.201 | 736 | 833 | 1.569 | 45 | 75 | 120 | 623 | 1.038 | 1.661 | 245 | 60 | 325 |
| 50 | 1.094 | 2.375 | 333 | 496 | 829 | 2.986 | 3.439 | 6.425 | 352 | 359 | 711 | 660 | 626 | 1.286 | 29 | 53 | 82 | 491 | 846 | 1.337 | 163 | 41 | 204 |
| 55 | 484 | 950 | 210 | 368 | 576 | 3.284 | 3.849 | 7.133 | 254 | 261 | 515 | 457 | 452 | 909 | 27 | 48 | 75 | 287 | 454 | 741 | 91 | 29 | 120 |
| 60 | 395 | 672 | 98 | 246 | 344 | 3.208 | 3.573 | 6.781 | 120 | 116 | 236 | 267 | 256 | 523 | 23 | 48 | 71 | 230 | 321 | 551 | 82 | 12 | 94 |
| 65 | 336 | 552 | 44 | 171 | 215 | 2.740 | 2.657 | 5.397 | 61 | 58 | 119 | 167 | 177 | 344 | 14 | 37 | 51 | 159 | 239 | 398 | 48 | 6 | 54 |
| 70 | 243 | 390 | 40 | 99 | 139 | 2.061 | 1.845 | 3.906 | 33 | 35 | 68 | 116 | 81 | 197 | 9 | 19 | 28 | 115 | 176 | 291 | 54 | 5 | 59 |
| 75 | 146 | 236 | 14 | 40 | 54 | 1.369 | 1.214 | 2.583 | 39 | 13 | 52 | 60 | 74 | 134 | 12 | 15 | 27 | 65 | 107 | 172 | 48 | 6 | 54 |
| 80 | 52 | 80 | 11 | 23 | 34 | 834 | 707 | 1.541 | 12 | 10 | 22 | 28 | 32 | 60 | 3 | 8 | 11 | 43 | 41 | 84 | 25 | 1 | 26 |
| 85 | 30 | 50 | 5 | 8 | 13 | 501 | 427 | 928 | 5 | 1 | 6 | 11 | 21 | 32 | 0 | 2 | 2 | 19 | 26 | 45 | 7 | 1 | 8 |
| 90 | 14 | 22 | 1 | 3 | 4 | 189 | 232 | 421 | 3 | 0 | 3 | 5 | 4 | 9 | 1 | 1 | 2 | 7 | 8 | 15 | 1 | 1 | 2 |
| 95 | 4 | 8 | 0 | 0 | 0 | 32 | 55 | 87 | 0 | 0 | 0 | 0 | 0 | 0 | 1 | 0 | 1 | 0 | 4 | 4 | 1 | 0 | 1 |
| 100 | 0 | 0 | 0 | 0 | 0 | 14 | 18 | 32 | 0 | 0 | 0 | 0 | 1 | 1 | 0 | 0 | 0 | 0 | 0 | 0 | 0 | 0 | 0 |
| 105 | 0 | 0 | 0 | 0 | 0 | 3 | 2 | 5 | 0 | 0 | 0 | 0 | 0 | 0 | 0 | 0 | 0 | 0 | 0 | 0 | 0 | 0 | 0 |
| 110 | 0 | 0 | 0 | 0 | 0 | 1 | 1 | 2 | 0 | 0 | 0 | 0 | 0 | 0 | 0 | 0 | 0 | 0 | 0 | 0 | 0 | 0 | 0 |
| 115 | 0 | 0 | 0 | 0 | 0 | 1 | 0 | 1 | 0 | 0 | 0 | 0 | 0 | 0 | 0 | 0 | 0 | 0 | 0 | 0 | 0 | 0 | 0 |

| EDAD | Ing.Sup | | | Tit.Sup | | | Doctor | | |
|------|---------|--------|--------|---------|------|------|--------|-------|-------|
| | H | M | T | H | M | T | H | M | T |
| | 13.564 | 16.293 | 29.857 | #### | #### | #### | 4.323 | 5.470 | 9.793 |
| 0 | 0 | 0 | 0 | 0 | 0 | 0 | 0 | 0 | 0 |
| 5 | 0 | 1 | 1 | 0 | 0 | 0 | 0 | 0 | 0 |
| 10 | 0 | 0 | 0 | 0 | 0 | 0 | 0 | 0 | 0 |
| 15 | 0 | 1 | 1 | 0 | 3 | 3 | 0 | 0 | 0 |
| 20 | 607 | 991 | 1.598 | 25 | 54 | 79 | 61 | 120 | 181 |
| 25 | 1.597 | 2.358 | 3.955 | 123 | 199 | 322 | 604 | 952 | 1.556 |
| 30 | 1.533 | 1.953 | 3.486 | 164 | 257 | 421 | 720 | 1.124 | 1.844 |
| 35 | 1.376 | 1.986 | 3.362 | 222 | 249 | 471 | 662 | 999 | 1.661 |
| 40 | 1.905 | 2.397 | 4.302 | 198 | 222 | 420 | 616 | 772 | 1.388 |
| 45 | 1.921 | 2.297 | 4.218 | 168 | 168 | 336 | 484 | 528 | 1.012 |
| 50 | 1.548 | 1.697 | 3.245 | 108 | 124 | 232 | 391 | 342 | 733 |
| 55 | 1.148 | 1.151 | 2.299 | 77 | 78 | 155 | 258 | 250 | 508 |
| 60 | 784 | 666 | 1.450 | 71 | 54 | 125 | 232 | 198 | 430 |
| 65 | 497 | 380 | 877 | 74 | 55 | 129 | 149 | 123 | 272 |
| 70 | 314 | 230 | 544 | 47 | 33 | 80 | 80 | 41 | 121 |
| 75 | 187 | 122 | 309 | 25 | 10 | 35 | 39 | 15 | 54 |
| 80 | 95 | 35 | 130 | 13 | 9 | 22 | 19 | 4 | 23 |
| 85 | 38 | 20 | 58 | 6 | 2 | 8 | 5 | 2 | 7 |
| 90 | 12 | 7 | 19 | 1 | 4 | 5 | 1 | 0 | 1 |
| 95 | 2 | 0 | 2 | 2 | 1 | 3 | 2 | 0 | 2 |
| 100 | 0 | 0 | 0 | 0 | 0 | 0 | 0 | 0 | 0 |
| 105 | 0 | 1 | 1 | 0 | 0 | 0 | 0 | 0 | 0 |
| 110 | 0 | 0 | 0 | 0 | 0 | 0 | 0 | 0 | 0 |
| 115 | 0 | 0 | 0 | 0 | 0 | 0 | 0 | 0 | 0 |

| Nacionalidad | | < 10 a | No sabe L/E | S/estudios | < 5º EGB | G.Esc | ESO/EGB | FP1 | Bach/FP2 | FP2 Mtria | BUP sup. | O.T.Med | Dipl E.Univ | Ing.Tec | Ing.Sup | Tit.Sup | Doctor |
|----------------|----------------|--------------|---------------|---------------|--------------|---------------|---------------|--------------|---------------|--------------|---------------|--------------|--------------|--------------|---------------|--------------|--------------|
| Total | 350.832 | 8.803 | 17.384 | 80.686 | 7.363 | 60.894 | 34.269 | 9.479 | 49.329 | 9.619 | 17.728 | 1.118 | 9.916 | 1.752 | 29.854 | 2.845 | 9.793 |
| ESPAÑA | 288.654 | 5.119 | 14.767 | 70.288 | 4.458 | 48.668 | 28.170 | 8.572 | 40.583 | 8.687 | 15.125 | 686 | 7.945 | 1.468 | 23.922 | 1.290 | 8.906 |
| ARGELIA | 7.892 | 645 | 584 | 2.084 | 467 | 1.873 | 685 | 38 | 643 | 29 | 116 | 14 | 119 | 24 | 400 | 115 | 56 |
| COLOMBIA | 5.929 | 391 | 67 | 752 | 225 | 1.013 | 881 | 203 | 1.309 | 147 | 289 | 115 | 132 | 25 | 258 | 91 | 31 |
| ITALIA | 4.824 | 235 | 119 | 386 | 81 | 595 | 489 | 79 | 984 | 125 | 383 | 47 | 267 | 39 | 696 | 161 | 138 |
| MARRUECOS | 4.071 | 212 | 414 | 1.165 | 394 | 950 | 385 | 37 | 256 | 24 | 82 | 7 | 31 | 3 | 69 | 23 | 19 |
| RUMANÍA | 3.926 | 116 | 304 | 709 | 283 | 1.153 | 361 | 88 | 413 | 62 | 101 | 8 | 77 | 13 | 174 | 29 | 35 |
| RUSIA | 2.975 | 261 | 104 | 448 | 89 | 528 | 244 | 47 | 314 | 28 | 130 | 11 | 119 | 13 | 482 | 121 | 36 |
| VENEZUELA | 2.479 | 205 | 28 | 313 | 37 | 239 | 242 | 23 | 450 | 47 | 115 | 28 | 123 | 21 | 453 | 120 | 35 |
| FRANCIA | 2.465 | 113 | 54 | 307 | 60 | 496 | 152 | 27 | 474 | 48 | 123 | 11 | 121 | 25 | 301 | 88 | 65 |
| UCRANIA | 2.231 | 187 | 83 | 342 | 94 | 454 | 201 | 42 | 206 | 33 | 95 | 16 | 103 | 8 | 286 | 67 | 14 |
| ARGENTINA | 2.129 | 120 | 28 | 162 | 86 | 371 | 352 | 30 | 431 | 45 | 164 | 16 | 80 | 6 | 166 | 54 | 18 |
| CHINA | 1.900 | 117 | 138 | 455 | 98 | 414 | 178 | 10 | 214 | 10 | 44 | 3 | 32 | 3 | 133 | 28 | 23 |
| REINO UNIDO | 1.417 | 80 | 18 | 158 | 23 | 203 | 95 | 11 | 252 | 13 | 62 | 8 | 74 | 10 | 290 | 76 | 44 |
| BULGARIA | 1.267 | 33 | 71 | 221 | 91 | 331 | 107 | 28 | 154 | 33 | 40 | 4 | 40 | 6 | 75 | 18 | 15 |
| ECUADOR | 1.090 | 27 | 33 | 134 | 158 | 344 | 126 | 9 | 143 | 8 | 47 | 4 | 12 | 0 | 30 | 5 | 10 |
| ALEMANIA | 1.085 | 48 | 30 | 124 | 27 | 184 | 77 | 16 | 170 | 26 | 57 | 8 | 56 | 10 | 171 | 43 | 38 |
| POLONIA | 943 | 44 | 44 | 118 | 31 | 173 | 80 | 13 | 112 | 24 | 58 | 5 | 36 | 5 | 141 | 28 | 31 |
| CUBA | 803 | 39 | 6 | 61 | 15 | 120 | 80 | 19 | 164 | 36 | 36 | 14 | 20 | 8 | 134 | 33 | 18 |
| BRASIL | 759 | 38 | 15 | 71 | 27 | 118 | 96 | 6 | 135 | 13 | 39 | 8 | 28 | 2 | 94 | 50 | 19 |
| PARAGUAY | 699 | 20 | 9 | 57 | 30 | 175 | 93 | 16 | 164 | 6 | 57 | 4 | 31 | 2 | 27 | 4 | 4 |
| PORTUGAL | 643 | 23 | 10 | 118 | 21 | 145 | 61 | 10 | 71 | 12 | 24 | 3 | 23 | 2 | 86 | 20 | 14 |
| PAÍSES BAJOS | 613 | 24 | 11 | 84 | 15 | 98 | 31 | 7 | 126 | 16 | 34 | 3 | 38 | 8 | 88 | 20 | 10 |
| SENEGAL | 596 | 8 | 33 | 264 | 69 | 157 | 31 | 3 | 15 | 2 | 5 | 0 | 2 | 0 | 6 | 1 | 0 |
| URUGUAY | 527 | 32 | 11 | 47 | 27 | 119 | 102 | 8 | 106 | 6 | 36 | 3 | 7 | 1 | 14 | 4 | 4 |
| GEORGIA | 477 | 35 | 26 | 82 | 27 | 113 | 53 | 5 | 40 | 1 | 11 | 6 | 21 | 1 | 44 | 11 | 1 |
| PERÚ | 463 | 37 | 1 | 51 | 14 | 56 | 66 | 16 | 67 | 19 | 27 | 11 | 20 | 1 | 47 | 16 | 14 |
| ESTADOS UNIDOS | 459 | 24 | 5 | 31 | 8 | 39 | 31 | 3 | 80 | 9 | 10 | 6 | 20 | 4 | 125 | 34 | 30 |
| PAKISTÁN | 457 | 31 | 29 | 149 | 22 | 116 | 55 | 2 | 28 | 1 | 10 | 1 | 3 | 0 | 7 | 1 | 2 |
| BÉLGICA | 442 | 30 | 4 | 55 | 8 | 88 | 23 | 6 | 76 | 7 | 24 | 5 | 13 | 6 | 71 | 19 | 7 |
| SUECIA | 395 | 23 | 10 | 47 | 8 | 47 | 27 | 1 | 67 | 8 | 18 | 4 | 43 | 4 | 66 | 18 | 4 |
| NIGERIA | 375 | 15 | 36 | 106 | 44 | 116 | 20 | 1 | 20 | 1 | 2 | 0 | 4 | 0 | 7 | 2 | 1 |
| ARMENIA | 374 | 28 | 18 | 62 | 19 | 102 | 24 | 8 | 32 | 4 | 19 | 0 | 23 | 1 | 31 | 3 | 0 |
| BOLIVIA | 371 | 11 | 11 | 53 | 27 | 80 | 44 | 11 | 64 | 3 | 19 | 1 | 9 | 1 | 25 | 9 | 3 |
| HONDURAS | 364 | 38 | 10 | 61 | 11 | 70 | 49 | 2 | 58 | 3 | 13 | 4 | 10 | 0 | 24 | 7 | 4 |
| LITUANIA | 343 | 26 | 20 | 48 | 14 | 67 | 28 | 3 | 43 | 4 | 19 | 0 | 9 | 1 | 47 | 10 | 4 |
| GUINEA ECUATO | 317 | 16 | 18 | 58 | 21 | 52 | 49 | 7 | 49 | 4 | 28 | 2 | 2 | 0 | 7 | 3 | 1 |
| REPÚBLICA DOM | 288 | 11 | 3 | 53 | 12 | 51 | 29 | 3 | 64 | 4 | 20 | 0 | 2 | 0 | 23 | 7 | 6 |

| Nacionalidad | | < 10 a | No sabe L/E | S/estudios | < 5º EGB | G.Esc | ESO/EGB | FP1 | Bach/FP2 | FP2 Mtria | BUP sup. | O.T.Med | Dipl E.Univ | Ing.Tec | Ing.Sup | Tit.Sup | Doctor |
|--------------------|-----|--------|-------------|------------|----------|-------|---------|-----|----------|-----------|----------|---------|-------------|---------|---------|---------|--------|
| CHILE | 268 | 12 | 3 | 29 | 8 | 35 | 23 | 5 | 45 | 8 | 22 | 5 | 15 | 4 | 36 | 8 | 10 |
| HUNGRÍA | 262 | 10 | 6 | 42 | 6 | 49 | 19 | 4 | 40 | 2 | 17 | 2 | 15 | 1 | 41 | 6 | 2 |
| MÉXICO | 233 | 10 | 2 | 12 | 5 | 17 | 21 | 5 | 42 | 4 | 9 | 3 | 7 | 5 | 62 | 16 | 13 |
| SIRIA | 233 | 17 | 12 | 65 | 12 | 46 | 23 | 0 | 27 | 0 | 3 | 1 | 7 | 1 | 15 | 1 | 3 |
| NORUEGA | 230 | 15 | 7 | 26 | 5 | 44 | 22 | 3 | 40 | 5 | 7 | 4 | 9 | 0 | 30 | 9 | 4 |
| BELARÚS | 220 | 20 | 6 | 42 | 5 | 24 | 21 | 3 | 15 | 0 | 6 | 6 | 13 | 0 | 44 | 15 | 0 |
| LETONIA | 219 | 26 | 8 | 34 | 11 | 36 | 16 | 2 | 24 | 5 | 12 | 4 | 7 | 1 | 23 | 7 | 3 |
| INDIA | 213 | 12 | 17 | 53 | 12 | 66 | 15 | 0 | 13 | 1 | 1 | 0 | 10 | 1 | 9 | 2 | 1 |
| IRLANDA | 191 | 8 | 11 | 14 | 4 | 24 | 14 | 1 | 27 | 1 | 7 | 1 | 9 | 1 | 46 | 16 | 7 |
| SUIZA | 171 | 6 | 1 | 22 | 5 | 25 | 11 | 5 | 33 | 10 | 8 | 3 | 8 | 2 | 22 | 6 | 4 |
| GRECIA | 170 | 6 | 8 | 20 | 7 | 17 | 5 | 2 | 17 | 1 | 3 | 2 | 9 | 4 | 45 | 15 | 9 |
| REPÚBLICA ESLOVACA | 163 | 9 | 8 | 15 | 4 | 32 | 12 | 1 | 20 | 1 | 11 | 0 | 7 | 0 | 35 | 3 | 5 |
| BANGLADESH | 161 | 11 | 19 | 48 | 6 | 47 | 13 | 0 | 8 | 0 | 2 | 0 | 1 | 0 | 5 | 0 | 1 |
| DINAMARCA | 149 | 5 | 8 | 17 | 3 | 19 | 15 | 2 | 23 | 1 | 6 | 4 | 10 | 3 | 26 | 6 | 1 |
| LÍBANO | 118 | 8 | 2 | 22 | 8 | 24 | 6 | 1 | 8 | 0 | 3 | 0 | 4 | 1 | 26 | 4 | 1 |
| AUSTRIA | 113 | 5 | 3 | 11 | 3 | 21 | 6 | 1 | 21 | 2 | 9 | 0 | 3 | 0 | 19 | 6 | 3 |
| KAZAJSTÁN | 112 | 11 | 4 | 20 | 4 | 10 | 10 | 1 | 16 | 1 | 4 | 0 | 2 | 0 | 21 | 5 | 3 |
| IRÁN | 108 | 3 | 2 | 14 | 3 | 15 | 8 | 0 | 9 | 0 | 7 | 1 | 3 | 0 | 25 | 10 | 8 |
| REPÚBLICA CHECA | 107 | 5 | 6 | 12 | 6 | 18 | 7 | 0 | 8 | 2 | 6 | 1 | 4 | 0 | 27 | 2 | 3 |
| FINLANDIA | 104 | 7 | 2 | 13 | 2 | 11 | 5 | 1 | 19 | 1 | 7 | 1 | 1 | 0 | 26 | 6 | 2 |
| FILIPINAS | 103 | 3 | 1 | 14 | 6 | 23 | 7 | 2 | 13 | 0 | 5 | 3 | 6 | 0 | 14 | 5 | 1 |
| EL SALVADOR | 96 | 9 | 2 | 17 | 1 | 12 | 13 | 1 | 19 | 2 | 4 | 2 | 3 | 0 | 7 | 3 | 1 |
| ESTONIA | 96 | 5 | 3 | 22 | 3 | 15 | 2 | 3 | 15 | 0 | 4 | 0 | 5 | 1 | 11 | 7 | 0 |
| CANADÁ | 95 | 7 | 3 | 11 | 3 | 9 | 6 | 0 | 16 | 1 | 3 | 1 | 6 | 1 | 19 | 5 | 4 |
| MOLDAVIA | 88 | 4 | 2 | 16 | 4 | 22 | 9 | 3 | 15 | 1 | 4 | 0 | 1 | 0 | 7 | 0 | 0 |
| MALI | 87 | 2 | 9 | 41 | 5 | 23 | 4 | 1 | 2 | 0 | 0 | 0 | 0 | 0 | 0 | 0 | 0 |
| EGIPTO | 86 | 0 | 1 | 23 | 5 | 20 | 4 | 3 | 8 | 1 | 2 | 1 | 3 | 1 | 10 | 3 | 1 |
| SERBIA | 78 | 7 | 3 | 2 | 3 | 10 | 4 | 1 | 11 | 2 | 5 | 1 | 3 | 1 | 14 | 4 | 7 |
| CAMERÚN | 75 | 0 | 2 | 17 | 8 | 20 | 7 | 1 | 7 | 1 | 4 | 0 | 2 | 0 | 1 | 4 | 1 |
| NICARAGUA | 70 | 8 | 3 | 7 | 0 | 10 | 8 | 0 | 17 | 2 | 2 | 1 | 2 | 0 | 8 | 1 | 1 |
| GHANA | 65 | 3 | 0 | 19 | 9 | 19 | 7 | 0 | 3 | 1 | 0 | 0 | 0 | 0 | 3 | 0 | 1 |
| CROACIA | 57 | 3 | 3 | 6 | 0 | 6 | 7 | 0 | 9 | 2 | 5 | 0 | 2 | 0 | 12 | 1 | 1 |
| TURQUÍA | 57 | 2 | 1 | 4 | 2 | 15 | 5 | 2 | 5 | 1 | 2 | 0 | 5 | 0 | 7 | 5 | 1 |
| GUINEA | 55 | 1 | 6 | 14 | 7 | 8 | 7 | 0 | 4 | 2 | 2 | 0 | 2 | 0 | 2 | 0 | 0 |
| ISLANDIA | 53 | 6 | 1 | 14 | 2 | 1 | 4 | 0 | 10 | 0 | 3 | 0 | 1 | 0 | 7 | 4 | 0 |
| ALBANIA | 52 | 10 | 1 | 3 | 3 | 4 | 5 | 0 | 10 | 3 | 2 | 0 | 1 | 0 | 4 | 4 | 2 |
| JAPÓN | 52 | 2 | 0 | 2 | 0 | 4 | 3 | 1 | 11 | 0 | 4 | 1 | 5 | 0 | 14 | 3 | 2 |
| TÚNEZ | 44 | 3 | 1 | 4 | 3 | 9 | 6 | 0 | 6 | 0 | 2 | 0 | 1 | 0 | 6 | 3 | 0 |
| COSTA DE MARFIL | 43 | 2 | 4 | 15 | 7 | 8 | 3 | 1 | 2 | 0 | 0 | 0 | 0 | 0 | 1 | 0 | 0 |

| Nacionalidad | | < 10 a | No sabe L/E | S/estudios | < 5º EGB | G.Esc | ESO/EGB | FP1 | Bach/FP2 | FP2 Mtria | BUP sup. | O.T.Med | Dipl E.Univ | Ing.Tec | Ing.Sup | Tit.Sup | Doctor |
|----------------------|----|--------|-------------|------------|----------|-------|---------|-----|----------|-----------|----------|---------|-------------|---------|---------|---------|--------|
| VIETNAM | 40 | 4 | 1 | 5 | 2 | 8 | 4 | 0 | 10 | 0 | 1 | 0 | 1 | 0 | 4 | 0 | 0 |
| LIBIA | 39 | 7 | 5 | 10 | 1 | 4 | 0 | 0 | 1 | 0 | 2 | 0 | 2 | 0 | 3 | 2 | 2 |
| GUINEA-BISSAU | 35 | 0 | 0 | 9 | 5 | 6 | 4 | 1 | 8 | 0 | 1 | 0 | 1 | 0 | 0 | 0 | 0 |
| JORDANIA | 33 | 2 | 0 | 11 | 0 | 6 | 2 | 0 | 5 | 0 | 1 | 0 | 0 | 0 | 1 | 1 | 4 |
| APÁTRIDAS | 32 | 0 | 5 | 7 | 1 | 6 | 3 | 1 | 5 | 0 | 1 | 0 | 0 | 0 | 3 | 0 | 0 |
| ESLOVENIA | 32 | 2 | 1 | 4 | 0 | 4 | 1 | 1 | 1 | 0 | 2 | 0 | 2 | 0 | 11 | 0 | 3 |
| AUSTRALIA | 31 | 0 | 0 | 3 | 0 | 4 | 3 | 0 | 8 | 2 | 3 | 0 | 1 | 0 | 6 | 1 | 0 |
| GUATEMALA | 29 | 4 | 0 | 4 | 1 | 5 | 2 | 0 | 3 | 0 | 1 | 1 | 3 | 0 | 4 | 1 | 0 |
| MACEDONIA | 28 | 7 | 1 | 2 | 0 | 6 | 1 | 1 | 0 | 0 | 0 | 0 | 0 | 0 | 5 | 4 | 1 |
| PALESTINA | 28 | 0 | 1 | 9 | 0 | 5 | 2 | 0 | 3 | 0 | 0 | 0 | 3 | 0 | 4 | 1 | 0 |
| AZERBAIYÁN | 27 | 2 | 0 | 9 | 1 | 5 | 2 | 0 | 2 | 0 | 1 | 0 | 0 | 0 | 5 | 0 | 0 |
| REP.DEMOCRÁTICA | 27 | 1 | 1 | 6 | 0 | 16 | 2 | 0 | 0 | 0 | 0 | 0 | 1 | 0 | 0 | 0 | 0 |
| GAMBIA | 26 | 0 | 1 | 13 | 3 | 5 | 1 | 1 | 1 | 0 | 1 | 0 | 0 | 0 | 0 | 0 | 0 |
| INDONESIA | 26 | 1 | 1 | 4 | 1 | 4 | 0 | 3 | 7 | 0 | 0 | 1 | 0 | 0 | 3 | 0 | 1 |
| MAURITANIA | 26 | 0 | 0 | 13 | 1 | 7 | 1 | 0 | 1 | 0 | 0 | 0 | 0 | 0 | 2 | 0 | 1 |
| COREA | 25 | 1 | 0 | 2 | 1 | 1 | 3 | 0 | 3 | 0 | 0 | 1 | 1 | 0 | 9 | 1 | 2 |
| IRAK | 24 | 2 | 0 | 3 | 2 | 5 | 2 | 0 | 1 | 1 | 1 | 0 | 3 | 0 | 2 | 1 | 1 |
| COSTA RICA | 23 | 0 | 0 | 3 | 1 | 2 | 1 | 1 | 0 | 2 | 1 | 0 | 3 | 0 | 6 | 1 | 2 |
| ARABIA SAUDÍ | 22 | 4 | 2 | 3 | 1 | 3 | 0 | 0 | 3 | 0 | 1 | 0 | 0 | 1 | 3 | 0 | 1 |
| NEPAL | 22 | 0 | 1 | 6 | 1 | 4 | 5 | 0 | 4 | 0 | 0 | 0 | 1 | 0 | 0 | 0 | 0 |
| LUXEMBURGO | 21 | 3 | 1 | 2 | 0 | 2 | 0 | 0 | 7 | 0 | 1 | 0 | 0 | 0 | 3 | 1 | 1 |
| CONGO | 20 | 0 | 0 | 3 | 3 | 8 | 0 | 0 | 3 | 0 | 2 | 0 | 0 | 0 | 1 | 0 | 0 |
| AFGANISTÁN | 19 | 0 | 1 | 4 | 0 | 3 | 2 | 0 | 1 | 0 | 7 | 0 | 1 | 0 | 0 | 0 | 0 |
| PANAMÁ | 19 | 4 | 0 | 0 | 0 | 2 | 1 | 0 | 2 | 0 | 4 | 0 | 2 | 1 | 2 | 0 | 1 |
| ETIOPÍA | 17 | 0 | 3 | 6 | 1 | 4 | 0 | 0 | 3 | 0 | 0 | 0 | 0 | 0 | 0 | 0 | 0 |
| SUDÁFRICA | 16 | 0 | 1 | 0 | 0 | 1 | 3 | 0 | 2 | 0 | 0 | 0 | 2 | 0 | 5 | 0 | 2 |
| ANGOLA | 14 | 1 | 1 | 5 | 1 | 4 | 1 | 0 | 1 | 0 | 0 | 0 | 0 | 0 | 0 | 0 | 0 |
| BOSNIA-HERZEGOVINA | 12 | 2 | 0 | 4 | 1 | 2 | 0 | 2 | 1 | 0 | 0 | 0 | 0 | 0 | 0 | 0 | 0 |
| ANTIGUOS TERRITORIOS | 11 | 1 | 0 | 2 | 0 | 2 | 2 | 0 | 3 | 0 | 1 | 0 | 0 | 0 | 0 | 0 | 0 |
| ISRAEL | 11 | 1 | 1 | 2 | 0 | 0 | 4 | 0 | 0 | 0 | 0 | 1 | 0 | 0 | 2 | 0 | 0 |
| HAITÍ | 10 | 1 | 0 | 1 | 1 | 1 | 3 | 0 | 1 | 1 | 0 | 0 | 0 | 0 | 0 | 1 | 0 |
| NUEVA ZELANDA | 9 | 3 | 0 | 0 | 0 | 0 | 0 | 0 | 2 | 1 | 0 | 0 | 0 | 0 | 2 | 1 | 0 |
| UZBEKISTÁN | 9 | 0 | 0 | 4 | 0 | 2 | 0 | 0 | 2 | 0 | 0 | 0 | 0 | 0 | 0 | 1 | 0 |
| KIRGUISTÁN | 8 | 1 | 0 | 1 | 0 | 0 | 0 | 0 | 2 | 0 | 1 | 0 | 0 | 0 | 1 | 0 | 2 |
| LIBERIA | 8 | 0 | 1 | 4 | 1 | 2 | 0 | 0 | 0 | 0 | 0 | 0 | 0 | 0 | 0 | 0 | 0 |
| MALTA | 8 | 0 | 0 | 0 | 0 | 1 | 0 | 0 | 1 | 0 | 0 | 0 | 0 | 0 | 4 | 0 | 2 |
| MONTENEGRO | 8 | 0 | 0 | 2 | 0 | 0 | 1 | 0 | 1 | 0 | 1 | 0 | 0 | 0 | 1 | 2 | 0 |
| YEMEN | 8 | 0 | 0 | 2 | 0 | 2 | 2 | 0 | 0 | 0 | 0 | 0 | 0 | 0 | 1 | 1 | 0 |
| CHIPRE | 7 | 0 | 0 | 0 | 0 | 1 | 1 | 2 | 1 | 0 | 0 | 0 | 0 | 0 | 2 | 0 | 0 |

| Nacionalidad | | < 10 a | No sabe L/E | S/estudios | < 5º EGB | G.Esc | ESO/EGB | FP1 | Bach/FP2 | FP2 Mtria | BUP sup. | O.T.Med | Dipl E.Univ | Ing.Tec | Ing.Sup | Tit.Sup | Doctor |
|----------------|---|--------|-------------|------------|----------|-------|---------|-----|----------|-----------|----------|---------|-------------|---------|---------|---------|--------|
| TAILANDIA | 7 | 0 | 0 | 0 | 0 | 2 | 1 | 0 | 1 | 0 | 1 | 0 | 0 | 0 | 2 | 0 | 0 |
| VANUATU | 7 | 0 | 0 | 1 | 0 | 2 | 1 | 0 | 1 | 0 | 1 | 0 | 0 | 0 | 1 | 0 | 0 |
| SIERRA LEONA | 6 | 0 | 0 | 3 | 0 | 0 | 0 | 0 | 1 | 0 | 1 | 0 | 1 | 0 | 0 | 0 | 0 |
| JAMAICA | 5 | 0 | 0 | 1 | 0 | 2 | 1 | 0 | 1 | 0 | 0 | 0 | 0 | 0 | 0 | 0 | 0 |
| KENIA | 5 | 0 | 0 | 0 | 1 | 1 | 0 | 0 | 0 | 0 | 1 | 0 | 0 | 0 | 2 | 0 | 0 |
| SUDÁN | 5 | 0 | 1 | 1 | 0 | 0 | 2 | 0 | 0 | 0 | 0 | 0 | 0 | 0 | 1 | 0 | 0 |
| ZIMBABWE | 5 | 2 | 0 | 0 | 0 | 0 | 2 | 0 | 0 | 0 | 1 | 0 | 0 | 0 | 0 | 0 | 0 |
| ANDORRA | 4 | 2 | 0 | 0 | 0 | 0 | 0 | 0 | 2 | 0 | 0 | 0 | 0 | 0 | 0 | 0 | 0 |
| BENIN | 4 | 0 | 0 | 1 | 0 | 0 | 1 | 0 | 0 | 0 | 1 | 0 | 0 | 0 | 0 | 0 | 1 |
| BURKINA FASO | 4 | 0 | 0 | 1 | 0 | 0 | 2 | 0 | 1 | 0 | 0 | 0 | 0 | 0 | 0 | 0 | 0 |
| CABO VERDE | 4 | 0 | 0 | 1 | 0 | 2 | 0 | 0 | 1 | 0 | 0 | 0 | 0 | 0 | 0 | 0 | 0 |
| COMORES | 3 | 0 | 1 | 0 | 0 | 0 | 0 | 0 | 1 | 0 | 0 | 0 | 0 | 0 | 1 | 0 | 0 |
| DOMINICA | 3 | 0 | 0 | 0 | 0 | 1 | 0 | 0 | 0 | 0 | 0 | 0 | 1 | 0 | 0 | 1 | 0 |
| MONGOLIA | 3 | 0 | 0 | 0 | 0 | 1 | 0 | 0 | 1 | 0 | 0 | 0 | 0 | 0 | 1 | 0 | 0 |
| CHAD | 2 | 0 | 0 | 1 | 0 | 0 | 0 | 0 | 0 | 0 | 1 | 0 | 0 | 0 | 0 | 0 | 0 |
| EMIRATOS ÁRAB | 2 | 0 | 0 | 0 | 0 | 1 | 0 | 0 | 1 | 0 | 0 | 0 | 0 | 0 | 0 | 0 | 0 |
| MALASIA | 2 | 0 | 0 | 0 | 0 | 0 | 0 | 0 | 1 | 0 | 1 | 0 | 0 | 0 | 0 | 0 | 0 |
| MOZAMBIQUE | 2 | 0 | 0 | 1 | 1 | 0 | 0 | 0 | 0 | 0 | 0 | 0 | 0 | 0 | 0 | 0 | 0 |
| MYANMAR | 2 | 0 | 0 | 0 | 0 | 0 | 0 | 0 | 2 | 0 | 0 | 0 | 0 | 0 | 0 | 0 | 0 |
| REPÚBLICA CENT | 2 | 0 | 0 | 0 | 0 | 1 | 0 | 0 | 0 | 0 | 1 | 0 | 0 | 0 | 0 | 0 | 0 |
| SINGAPUR | 2 | 0 | 0 | 0 | 0 | 0 | 0 | 0 | 0 | 0 | 0 | 0 | 0 | 1 | 1 | 0 | 0 |
| SOMALIA | 2 | 0 | 0 | 1 | 0 | 1 | 0 | 0 | 0 | 0 | 0 | 0 | 0 | 0 | 0 | 0 | 0 |
| TOGO | 2 | 0 | 0 | 0 | 0 | 1 | 0 | 0 | 1 | 0 | 0 | 0 | 0 | 0 | 0 | 0 | 0 |
| TURKMENISTÁN | 2 | 0 | 0 | 0 | 0 | 0 | 0 | 0 | 1 | 1 | 0 | 0 | 0 | 0 | 0 | 0 | 0 |
| ANTIGUA Y BARE | 1 | 0 | 0 | 1 | 0 | 0 | 0 | 0 | 0 | 0 | 0 | 0 | 0 | 0 | 0 | 0 | 0 |
| ERITREA | 1 | 0 | 0 | 0 | 0 | 0 | 0 | 1 | 0 | 0 | 0 | 0 | 0 | 0 | 0 | 0 | 0 |
| GUYANA | 1 | 0 | 0 | 0 | 0 | 0 | 0 | 0 | 0 | 0 | 0 | 0 | 0 | 0 | 0 | 1 | 0 |
| MADAGASCAR | 1 | 0 | 0 | 1 | 0 | 0 | 0 | 0 | 0 | 0 | 0 | 0 | 0 | 0 | 0 | 0 | 0 |
| MALDIVAS | 1 | 0 | 0 | 0 | 0 | 1 | 0 | 0 | 0 | 0 | 0 | 0 | 0 | 0 | 0 | 0 | 0 |
| MAURICIO | 1 | 0 | 0 | 1 | 0 | 0 | 0 | 0 | 0 | 0 | 0 | 0 | 0 | 0 | 0 | 0 | 0 |
| NAMIBIA | 1 | 0 | 0 | 0 | 0 | 1 | 0 | 0 | 0 | 0 | 0 | 0 | 0 | 0 | 0 | 0 | 0 |
| OMÁN | 1 | 0 | 0 | 0 | 0 | 1 | 0 | 0 | 0 | 0 | 0 | 0 | 0 | 0 | 0 | 0 | 0 |
| RUANDA | 1 | 0 | 0 | 0 | 0 | 0 | 0 | 0 | 1 | 0 | 0 | 0 | 0 | 0 | 0 | 0 | 0 |
| SAN MARINO | 1 | 0 | 0 | 0 | 0 | 0 | 1 | 0 | 0 | 0 | 0 | 0 | 0 | 0 | 0 | 0 | 0 |
| SANTO TOMÉ Y P | 1 | 0 | 0 | 0 | 0 | 1 | 0 | 0 | 0 | 0 | 0 | 0 | 0 | 0 | 0 | 0 | 0 |
| SRI LANKA | 1 | 0 | 0 | 0 | 0 | 0 | 0 | 0 | 0 | 0 | 0 | 0 | 0 | 0 | 1 | 0 | 0 |
| SUDÁN DEL SUR | 1 | 0 | 0 | 0 | 0 | 0 | 0 | 0 | 0 | 0 | 0 | 0 | 0 | 0 | 1 | 0 | 0 |
| TANZANIA | 1 | 0 | 0 | 0 | 0 | 0 | 0 | 0 | 0 | 0 | 0 | 0 | 0 | 0 | 1 | 0 | 0 |
| ZAMBIA | 1 | 0 | 0 | 0 | 0 | 1 | 0 | 0 | 0 | 0 | 0 | 0 | 0 | 0 | 0 | 0 | 0 |

| Nacionalidad | | Total | | | < 10 a | | | No sabe L/E | | | S/estudios | | | < 5º EGB | | | G.Esc | |
|---------------------------|-----|---------|---------|---------|--------|-------|-------|-------------|-------|--------|------------|--------|--------|----------|-------|-------|--------|--------|
| | | H | M | T | H | M | T | H | M | T | H | M | T | H | M | T | H | M |
| Total | | 170.144 | 180.688 | 350.832 | 4.553 | 4.250 | 8.803 | 9.101 | 8.283 | 17.384 | 38.457 | 42.229 | 80.686 | 3.964 | 3.399 | 7.363 | 29.141 | 31.753 |
| ESPAÑA | 108 | 138.497 | 150.157 | 288.654 | 2.675 | 2.444 | 5.119 | 7.749 | 7.018 | 14.767 | 32.742 | 37.546 | 70.288 | 2.288 | 2.170 | 4.458 | 22.663 | 26.005 |
| ARGELIA | 203 | 4.845 | 3.047 | 7.892 | 338 | 307 | 645 | 314 | 270 | 584 | 1.305 | 779 | 2.084 | 327 | 140 | 467 | 1.263 | 610 |
| COLOMBIA | 343 | 2.695 | 3.234 | 5.929 | 192 | 199 | 391 | 33 | 34 | 67 | 369 | 383 | 752 | 108 | 117 | 225 | 466 | 547 |
| ITALIA | 115 | 2.720 | 2.104 | 4.824 | 111 | 124 | 235 | 72 | 47 | 119 | 209 | 177 | 386 | 47 | 34 | 81 | 376 | 219 |
| MARRUECOS | 228 | 2.252 | 1.819 | 4.071 | 130 | 82 | 212 | 215 | 199 | 414 | 639 | 526 | 1.165 | 234 | 160 | 394 | 536 | 414 |
| RUMANÍA | 128 | 1.829 | 2.097 | 3.926 | 65 | 51 | 116 | 140 | 164 | 304 | 384 | 325 | 709 | 134 | 149 | 283 | 542 | 611 |
| RUSIA | 154 | 1.176 | 1.799 | 2.975 | 133 | 128 | 261 | 47 | 57 | 104 | 205 | 243 | 448 | 38 | 51 | 89 | 196 | 332 |
| VENEZUELA | 351 | 1.075 | 1.404 | 2.479 | 103 | 102 | 205 | 15 | 13 | 28 | 145 | 168 | 313 | 12 | 25 | 37 | 99 | 140 |
| FRANCIA | 110 | 1.239 | 1.226 | 2.465 | 58 | 55 | 113 | 25 | 29 | 54 | 153 | 154 | 307 | 34 | 26 | 60 | 258 | 238 |
| UCRANIA | 135 | 946 | 1.285 | 2.231 | 79 | 108 | 187 | 38 | 45 | 83 | 152 | 190 | 342 | 47 | 47 | 94 | 198 | 256 |
| ARGENTINA | 340 | 1.037 | 1.092 | 2.129 | 65 | 55 | 120 | 14 | 14 | 28 | 85 | 77 | 162 | 55 | 31 | 86 | 170 | 201 |
| CHINA | 407 | 940 | 960 | 1.900 | 61 | 56 | 117 | 77 | 61 | 138 | 237 | 218 | 455 | 56 | 42 | 98 | 201 | 213 |
| REINO UNIDO | 125 | 801 | 616 | 1.417 | 29 | 51 | 80 | 7 | 11 | 18 | 80 | 78 | 158 | 15 | 8 | 23 | 119 | 84 |
| BULGARIA | 104 | 646 | 621 | 1.267 | 20 | 13 | 33 | 40 | 31 | 71 | 120 | 101 | 221 | 47 | 44 | 91 | 169 | 162 |
| ECUADOR | 345 | 642 | 448 | 1.090 | 13 | 14 | 27 | 17 | 16 | 33 | 78 | 56 | 134 | 103 | 55 | 158 | 215 | 129 |
| ALEMANIA | 126 | 543 | 542 | 1.085 | 23 | 25 | 48 | 18 | 12 | 30 | 61 | 63 | 124 | 10 | 17 | 27 | 94 | 90 |
| POLONIA | 122 | 427 | 516 | 943 | 27 | 17 | 44 | 23 | 21 | 44 | 64 | 54 | 118 | 13 | 18 | 31 | 87 | 86 |
| CUBA | 315 | 378 | 425 | 803 | 19 | 20 | 39 | 6 | 0 | 6 | 25 | 36 | 61 | 5 | 10 | 15 | 49 | 71 |
| BRASIL | 342 | 301 | 458 | 759 | 19 | 19 | 38 | 8 | 7 | 15 | 36 | 35 | 71 | 17 | 10 | 27 | 39 | 79 |
| PARAGUAY | 347 | 221 | 478 | 699 | 13 | 7 | 20 | 3 | 6 | 9 | 19 | 38 | 57 | 8 | 22 | 30 | 49 | 126 |
| PORTUGAL | 123 | 369 | 274 | 643 | 14 | 9 | 23 | 4 | 6 | 10 | 62 | 56 | 118 | 16 | 5 | 21 | 80 | 65 |
| PAÍSES BAJOS | 121 | 322 | 291 | 613 | 10 | 14 | 24 | 6 | 5 | 11 | 42 | 42 | 84 | 4 | 11 | 15 | 50 | 48 |
| SENEGAL | 239 | 485 | 111 | 596 | 4 | 4 | 8 | 12 | 21 | 33 | 228 | 36 | 264 | 61 | 8 | 69 | 134 | 23 |
| URUGUAY | 350 | 273 | 254 | 527 | 14 | 18 | 32 | 6 | 5 | 11 | 32 | 15 | 47 | 14 | 13 | 27 | 63 | 56 |
| GEORGIA | 139 | 216 | 261 | 477 | 17 | 18 | 35 | 15 | 11 | 26 | 40 | 42 | 82 | 16 | 11 | 27 | 45 | 68 |
| PERÚ | 348 | 213 | 250 | 463 | 16 | 21 | 37 | 0 | 1 | 1 | 23 | 28 | 51 | 6 | 8 | 14 | 31 | 25 |
| ESTADOS UNIDOS DE AMÉRICA | 302 | 211 | 248 | 459 | 11 | 13 | 24 | 3 | 2 | 5 | 17 | 14 | 31 | 7 | 1 | 8 | 20 | 19 |
| PAKISTÁN | 426 | 298 | 159 | 457 | 14 | 17 | 31 | 19 | 10 | 29 | 102 | 47 | 149 | 17 | 5 | 22 | 79 | 37 |
| BÉLGICA | 103 | 234 | 208 | 442 | 16 | 14 | 30 | 3 | 1 | 4 | 29 | 26 | 55 | 3 | 5 | 8 | 51 | 37 |
| SUECIA | 131 | 188 | 207 | 395 | 6 | 17 | 23 | 5 | 5 | 10 | 27 | 20 | 47 | 3 | 5 | 8 | 24 | 23 |
| NIGERIA | 234 | 206 | 169 | 375 | 11 | 4 | 15 | 14 | 22 | 36 | 53 | 53 | 106 | 28 | 16 | 44 | 62 | 54 |
| ARMENIA | 148 | 188 | 186 | 374 | 15 | 13 | 28 | 10 | 8 | 18 | 31 | 31 | 62 | 12 | 7 | 19 | 55 | 47 |
| BOLIVIA | 341 | 165 | 206 | 371 | 5 | 6 | 11 | 6 | 5 | 11 | 25 | 28 | 53 | 11 | 16 | 27 | 35 | 45 |
| HONDURAS | 321 | 111 | 253 | 364 | 18 | 20 | 38 | 4 | 6 | 10 | 21 | 40 | 61 | 5 | 6 | 11 | 20 | 50 |
| LITUANIA | 142 | 155 | 188 | 343 | 13 | 13 | 26 | 8 | 12 | 20 | 22 | 26 | 48 | 11 | 3 | 14 | 31 | 36 |
| GUINEA ECUATORIAL | 220 | 127 | 190 | 317 | 7 | 9 | 16 | 10 | 8 | 18 | 22 | 36 | 58 | 8 | 13 | 21 | 17 | 35 |
| REPÚBLICA DOMINICANA | 326 | 137 | 151 | 288 | 3 | 8 | 11 | 2 | 1 | 3 | 28 | 25 | 53 | 7 | 5 | 12 | 24 | 27 |

| | ESO/EGB | | | FP1 | | | Bach/FP2 | | | FP2 Mtria | | | BUP sup. | | | O.T.Med | | | Dipl E.Univ | | | Ing.Te | |
|--------|---------|--------|--------|-------|-------|-------|----------|--------|--------|-----------|-------|-------|----------|-------|--------|---------|-----|-------|-------------|-------|-------|--------|-----|
| T | H | M | T | H | M | T | H | M | T | H | M | T | H | M | T | H | M | T | H | M | T | H | M |
| 60.894 | 18.417 | 15.852 | 34.269 | 4.154 | 5.325 | 9.479 | 23.952 | 25.377 | 49.329 | 5.163 | 4.456 | 9.619 | 8.794 | 8.934 | 17.728 | 406 | 712 | 1.118 | 3.482 | 6.434 | 9.916 | 1.351 | 401 |
| 48.668 | 15.266 | 12.904 | 28.170 | 3.691 | 4.881 | 8.572 | 19.663 | 20.920 | 40.583 | 4.655 | 4.032 | 8.687 | 7.554 | 7.571 | 15.125 | 228 | 458 | 686 | 2.674 | 5.271 | 7.945 | 1.143 | 325 |
| 1.873 | 410 | 275 | 685 | 25 | 13 | 38 | 400 | 243 | 643 | 13 | 16 | 29 | 63 | 53 | 116 | 8 | 6 | 14 | 65 | 54 | 119 | 17 | 7 |
| 1.013 | 415 | 466 | 881 | 72 | 131 | 203 | 606 | 703 | 1.309 | 61 | 86 | 147 | 126 | 163 | 289 | 40 | 75 | 115 | 39 | 93 | 132 | 20 | 5 |
| 595 | 281 | 208 | 489 | 53 | 26 | 79 | 586 | 398 | 984 | 86 | 39 | 125 | 228 | 155 | 383 | 24 | 23 | 47 | 126 | 141 | 267 | 33 | 6 |
| 950 | 228 | 157 | 385 | 20 | 17 | 37 | 120 | 136 | 256 | 13 | 11 | 24 | 47 | 35 | 82 | 4 | 3 | 7 | 15 | 16 | 31 | 2 | 1 |
| 1.153 | 167 | 194 | 361 | 46 | 42 | 88 | 176 | 237 | 413 | 35 | 27 | 62 | 42 | 59 | 101 | 2 | 6 | 8 | 17 | 60 | 77 | 9 | 4 |
| 528 | 111 | 133 | 244 | 19 | 28 | 47 | 111 | 203 | 314 | 14 | 14 | 28 | 39 | 91 | 130 | 4 | 7 | 11 | 34 | 85 | 119 | 9 | 4 |
| 239 | 104 | 138 | 242 | 11 | 12 | 23 | 210 | 240 | 450 | 23 | 24 | 47 | 56 | 59 | 115 | 9 | 19 | 28 | 47 | 76 | 123 | 10 | 11 |
| 496 | 79 | 73 | 152 | 10 | 17 | 27 | 232 | 242 | 474 | 29 | 19 | 48 | 53 | 70 | 123 | 6 | 5 | 11 | 53 | 68 | 121 | 20 | 5 |
| 454 | 98 | 103 | 201 | 19 | 23 | 42 | 79 | 127 | 206 | 15 | 18 | 33 | 38 | 57 | 95 | 8 | 8 | 16 | 42 | 61 | 103 | 3 | 5 |
| 371 | 176 | 176 | 352 | 16 | 14 | 30 | 205 | 226 | 431 | 26 | 19 | 45 | 79 | 85 | 164 | 6 | 10 | 16 | 32 | 48 | 80 | 4 | 2 |
| 414 | 95 | 83 | 178 | 6 | 4 | 10 | 100 | 114 | 214 | 7 | 3 | 10 | 21 | 23 | 44 | 1 | 2 | 3 | 12 | 20 | 32 | 2 | 1 |
| 203 | 61 | 34 | 95 | 9 | 2 | 11 | 135 | 117 | 252 | 10 | 3 | 13 | 28 | 34 | 62 | 5 | 3 | 8 | 42 | 32 | 74 | 9 | 1 |
| 331 | 55 | 52 | 107 | 15 | 13 | 28 | 95 | 59 | 154 | 19 | 14 | 33 | 16 | 24 | 40 | 2 | 2 | 4 | 11 | 29 | 40 | 5 | 1 |
| 344 | 73 | 53 | 126 | 7 | 2 | 9 | 82 | 61 | 143 | 3 | 5 | 8 | 28 | 19 | 47 | 1 | 3 | 4 | 5 | 7 | 12 | 0 | 0 |
| 184 | 43 | 34 | 77 | 7 | 9 | 16 | 83 | 87 | 170 | 15 | 11 | 26 | 32 | 25 | 57 | 4 | 4 | 8 | 25 | 31 | 56 | 4 | 6 |
| 173 | 41 | 39 | 80 | 7 | 6 | 13 | 49 | 63 | 112 | 14 | 10 | 24 | 24 | 34 | 58 | 2 | 3 | 5 | 11 | 25 | 36 | 4 | 1 |
| 120 | 41 | 39 | 80 | 9 | 10 | 19 | 77 | 87 | 164 | 21 | 15 | 36 | 16 | 20 | 36 | 7 | 7 | 14 | 8 | 12 | 20 | 6 | 2 |
| 118 | 35 | 61 | 96 | 2 | 4 | 6 | 51 | 84 | 135 | 7 | 6 | 13 | 12 | 27 | 39 | 2 | 6 | 8 | 13 | 15 | 28 | 2 | 0 |
| 175 | 30 | 63 | 93 | 4 | 12 | 16 | 49 | 115 | 164 | 2 | 4 | 6 | 23 | 34 | 57 | 0 | 4 | 4 | 7 | 24 | 31 | 2 | 0 |
| 145 | 38 | 23 | 61 | 7 | 3 | 10 | 51 | 20 | 71 | 4 | 8 | 12 | 14 | 10 | 24 | 2 | 1 | 3 | 8 | 15 | 23 | 2 | 0 |
| 98 | 12 | 19 | 31 | 6 | 1 | 7 | 59 | 67 | 126 | 10 | 6 | 16 | 18 | 16 | 34 | 2 | 1 | 3 | 23 | 15 | 38 | 5 | 3 |
| 157 | 22 | 9 | 31 | 3 | 0 | 3 | 11 | 4 | 15 | 1 | 1 | 2 | 4 | 1 | 5 | 0 | 0 | 0 | 2 | 0 | 2 | 0 | 0 |
| 119 | 52 | 50 | 102 | 7 | 1 | 8 | 58 | 48 | 106 | 2 | 4 | 6 | 17 | 19 | 36 | 0 | 3 | 3 | 2 | 5 | 7 | 1 | 0 |
| 113 | 22 | 31 | 53 | 3 | 2 | 5 | 22 | 18 | 40 | 1 | 0 | 1 | 4 | 7 | 11 | 1 | 5 | 6 | 7 | 14 | 21 | 1 | 0 |
| 56 | 28 | 38 | 66 | 7 | 9 | 16 | 27 | 40 | 67 | 8 | 11 | 19 | 13 | 14 | 27 | 5 | 6 | 11 | 14 | 6 | 20 | 1 | 0 |
| 39 | 9 | 22 | 31 | 2 | 1 | 3 | 32 | 48 | 80 | 4 | 5 | 9 | 3 | 7 | 10 | 4 | 2 | 6 | 9 | 11 | 20 | 3 | 1 |
| 116 | 36 | 19 | 55 | 2 | 0 | 2 | 16 | 12 | 28 | 1 | 0 | 1 | 4 | 6 | 10 | 1 | 0 | 1 | 1 | 2 | 3 | 0 | 0 |
| 88 | 14 | 9 | 23 | 4 | 2 | 6 | 32 | 44 | 76 | 5 | 2 | 7 | 8 | 16 | 24 | 2 | 3 | 5 | 7 | 6 | 13 | 6 | 0 |
| 47 | 13 | 14 | 27 | 1 | 0 | 1 | 35 | 32 | 67 | 5 | 3 | 8 | 9 | 9 | 18 | 1 | 3 | 4 | 12 | 31 | 43 | 3 | 1 |
| 116 | 14 | 6 | 20 | 1 | 0 | 1 | 10 | 10 | 20 | 1 | 0 | 1 | 2 | 0 | 2 | 0 | 0 | 0 | 4 | 0 | 4 | 0 | 0 |
| 102 | 15 | 9 | 24 | 4 | 4 | 8 | 16 | 16 | 32 | 2 | 2 | 4 | 4 | 15 | 19 | 0 | 0 | 0 | 9 | 14 | 23 | 1 | 0 |
| 80 | 19 | 25 | 44 | 5 | 6 | 11 | 29 | 35 | 64 | 3 | 0 | 3 | 11 | 8 | 19 | 0 | 1 | 1 | 1 | 8 | 9 | 1 | 0 |
| 70 | 9 | 40 | 49 | 1 | 1 | 2 | 13 | 45 | 58 | 0 | 3 | 3 | 5 | 8 | 13 | 0 | 4 | 4 | 2 | 8 | 10 | 0 | 0 |
| 67 | 13 | 15 | 28 | 3 | 0 | 3 | 17 | 26 | 43 | 1 | 3 | 4 | 11 | 8 | 19 | 0 | 0 | 0 | 5 | 4 | 9 | 1 | 0 |
| 52 | 18 | 31 | 49 | 4 | 3 | 7 | 19 | 30 | 49 | 3 | 1 | 4 | 12 | 16 | 28 | 0 | 2 | 2 | 0 | 2 | 2 | 0 | 0 |
| 51 | 15 | 14 | 29 | 2 | 1 | 3 | 30 | 34 | 64 | 2 | 2 | 4 | 9 | 11 | 20 | 0 | 0 | 0 | 0 | 2 | 2 | 0 | 0 |

| c | Ing.Sup | | | Tit.Sup | | | Doctor | | |
|-------|---------|--------|--------|---------|-------|-------|--------|-------|-------|
| | T | H | M | T | H | M | T | H | M |
| 1.752 | 13.562 | 16.292 | 29.854 | 1.324 | 1.521 | 2.845 | 4.323 | 5.470 | 9.793 |
| 1.468 | 10.952 | 12.970 | 23.922 | 613 | 677 | #### | 3.941 | 4.965 | 8.906 |
| 24 | 211 | 189 | 400 | 62 | 53 | 115 | 24 | 32 | 56 |
| 25 | 98 | 160 | 258 | 35 | 56 | 91 | 15 | 16 | 31 |
| 39 | 341 | 355 | 696 | 81 | 80 | 161 | 66 | 72 | 138 |
| 3 | 32 | 37 | 69 | 9 | 14 | 23 | 8 | 11 | 19 |
| 13 | 52 | 122 | 174 | 11 | 18 | 29 | 7 | 28 | 35 |
| 13 | 156 | 326 | 482 | 52 | 69 | 121 | 8 | 28 | 36 |
| 21 | 170 | 283 | 453 | 46 | 74 | 120 | 15 | 20 | 35 |
| 25 | 145 | 156 | 301 | 51 | 37 | 88 | 33 | 32 | 65 |
| 8 | 103 | 183 | 286 | 24 | 43 | 67 | 3 | 11 | 14 |
| 6 | 69 | 97 | 166 | 25 | 29 | 54 | 10 | 8 | 18 |
| 3 | 51 | 82 | 133 | 10 | 18 | 28 | 3 | 20 | 23 |
| 10 | 179 | 111 | 290 | 45 | 31 | 76 | 28 | 16 | 44 |
| 6 | 24 | 51 | 75 | 7 | 11 | 18 | 1 | 14 | 15 |
| 0 | 14 | 16 | 30 | 0 | 5 | 5 | 3 | 7 | 10 |
| 10 | 77 | 94 | 171 | 27 | 16 | 43 | 20 | 18 | 38 |
| 5 | 47 | 94 | 141 | 10 | 18 | 28 | 4 | 27 | 31 |
| 8 | 65 | 69 | 134 | 16 | 17 | 33 | 8 | 10 | 18 |
| 2 | 38 | 56 | 94 | 13 | 37 | 50 | 7 | 12 | 19 |
| 2 | 9 | 18 | 27 | 2 | 2 | 4 | 1 | 3 | 4 |
| 2 | 44 | 42 | 86 | 13 | 7 | 20 | 10 | 4 | 14 |
| 8 | 58 | 30 | 88 | 10 | 10 | 20 | 7 | 3 | 10 |
| 0 | 3 | 3 | 6 | 0 | 1 | 1 | 0 | 0 | 0 |
| 1 | 2 | 12 | 14 | 1 | 3 | 4 | 2 | 2 | 4 |
| 1 | 18 | 26 | 44 | 4 | 7 | 11 | 0 | 1 | 1 |
| 1 | 15 | 32 | 47 | 10 | 6 | 16 | 9 | 5 | 14 |
| 4 | 55 | 70 | 125 | 19 | 15 | 34 | 13 | 17 | 30 |
| 0 | 5 | 2 | 7 | 1 | 0 | 1 | 0 | 2 | 2 |
| 6 | 42 | 29 | 71 | 8 | 11 | 19 | 4 | 3 | 7 |
| 4 | 31 | 35 | 66 | 9 | 9 | 18 | 4 | 0 | 4 |
| 0 | 4 | 3 | 7 | 1 | 1 | 2 | 1 | 0 | 1 |
| 1 | 11 | 20 | 31 | 3 | 0 | 3 | 0 | 0 | 0 |
| 1 | 9 | 16 | 25 | 4 | 5 | 9 | 1 | 2 | 3 |
| 0 | 8 | 16 | 24 | 2 | 5 | 7 | 3 | 1 | 4 |
| 1 | 16 | 31 | 47 | 3 | 7 | 10 | 0 | 4 | 4 |
| 0 | 5 | 2 | 7 | 1 | 2 | 3 | 1 | 0 | 1 |
| 0 | 11 | 12 | 23 | 2 | 5 | 7 | 2 | 4 | 6 |

| Nacionalidad | | Total | | | < 10 a | | | No sabe L/E | | | S/estudios | | | < 5º EGB | | | G.Esc | |
|--------------------|-----|-------|-----|-----|--------|----|----|-------------|----|----|------------|----|----|----------|---|----|-------|----|
| CHILE | 344 | 126 | 142 | 268 | 9 | 3 | 12 | 2 | 1 | 3 | 9 | 20 | 29 | 4 | 4 | 8 | 14 | 21 |
| HUNGRÍA | 112 | 131 | 131 | 262 | 8 | 2 | 10 | 5 | 1 | 6 | 20 | 22 | 42 | 5 | 1 | 6 | 28 | 21 |
| MÉXICO | 303 | 95 | 138 | 233 | 3 | 7 | 10 | 1 | 1 | 2 | 6 | 6 | 12 | 1 | 4 | 5 | 5 | 12 |
| SIRIA | 433 | 129 | 104 | 233 | 9 | 8 | 17 | 7 | 5 | 12 | 41 | 24 | 65 | 6 | 6 | 12 | 20 | 26 |
| NORUEGA | 120 | 123 | 107 | 230 | 8 | 7 | 15 | 4 | 3 | 7 | 15 | 11 | 26 | 2 | 3 | 5 | 23 | 21 |
| BELARÚS | 138 | 100 | 120 | 220 | 12 | 8 | 20 | 4 | 2 | 6 | 21 | 21 | 42 | 3 | 2 | 5 | 8 | 16 |
| LETONIA | 136 | 103 | 116 | 219 | 13 | 13 | 26 | 5 | 3 | 8 | 13 | 21 | 34 | 7 | 4 | 11 | 21 | 15 |
| INDIA | 410 | 127 | 86 | 213 | 6 | 6 | 12 | 10 | 7 | 17 | 32 | 21 | 53 | 8 | 4 | 12 | 38 | 28 |
| IRLANDA | 113 | 115 | 76 | 191 | 5 | 3 | 8 | 4 | 7 | 11 | 9 | 5 | 14 | 3 | 1 | 4 | 12 | 12 |
| SUIZA | 132 | 88 | 83 | 171 | 2 | 4 | 6 | 1 | 0 | 1 | 9 | 13 | 22 | 4 | 1 | 5 | 12 | 13 |
| GRECIA | 111 | 94 | 76 | 170 | 4 | 2 | 6 | 3 | 5 | 8 | 14 | 6 | 20 | 5 | 2 | 7 | 11 | 6 |
| REPÚBLICA ESLOVACA | 144 | 54 | 109 | 163 | 5 | 4 | 9 | 1 | 7 | 8 | 6 | 9 | 15 | 1 | 3 | 4 | 12 | 20 |
| BANGLADESH | 404 | 101 | 60 | 161 | 6 | 5 | 11 | 8 | 11 | 19 | 32 | 16 | 48 | 6 | 0 | 6 | 29 | 18 |
| DINAMARCA | 107 | 75 | 74 | 149 | 1 | 4 | 5 | 4 | 4 | 8 | 8 | 9 | 17 | 0 | 3 | 3 | 11 | 8 |
| LÍBANO | 420 | 64 | 54 | 118 | 3 | 5 | 8 | 2 | 0 | 2 | 9 | 13 | 22 | 7 | 1 | 8 | 15 | 9 |
| AUSTRIA | 102 | 54 | 59 | 113 | 4 | 1 | 5 | 1 | 2 | 3 | 6 | 5 | 11 | 1 | 2 | 3 | 8 | 13 |
| KAZAJSTÁN | 443 | 48 | 64 | 112 | 6 | 5 | 11 | 3 | 1 | 4 | 8 | 12 | 20 | 3 | 1 | 4 | 4 | 6 |
| IRÁN | 413 | 58 | 50 | 108 | 2 | 1 | 3 | 1 | 1 | 2 | 8 | 6 | 14 | 1 | 2 | 3 | 8 | 7 |
| REPÚBLICA CHECA | 143 | 43 | 64 | 107 | 3 | 2 | 5 | 5 | 1 | 6 | 3 | 9 | 12 | 2 | 4 | 6 | 11 | 7 |
| FINLANDIA | 109 | 48 | 56 | 104 | 4 | 3 | 7 | 1 | 1 | 2 | 7 | 6 | 13 | 0 | 2 | 2 | 5 | 6 |
| FILIPINAS | 409 | 32 | 71 | 103 | 1 | 2 | 3 | 1 | 0 | 1 | 4 | 10 | 14 | 2 | 4 | 6 | 8 | 15 |
| EL SALVADOR | 317 | 43 | 53 | 96 | 6 | 3 | 9 | 2 | 0 | 2 | 7 | 10 | 17 | 0 | 1 | 1 | 6 | 6 |
| ESTONIA | 141 | 43 | 53 | 96 | 2 | 3 | 5 | 1 | 2 | 3 | 8 | 14 | 22 | 1 | 2 | 3 | 10 | 5 |
| CANADÁ | 301 | 47 | 48 | 95 | 3 | 4 | 7 | 1 | 2 | 3 | 5 | 6 | 11 | 1 | 2 | 3 | 6 | 3 |
| MOLDAVIA | 137 | 36 | 52 | 88 | 1 | 3 | 4 | 1 | 1 | 2 | 8 | 8 | 16 | 3 | 1 | 4 | 10 | 12 |
| MALI | 227 | 73 | 14 | 87 | 2 | 0 | 2 | 7 | 2 | 9 | 37 | 4 | 41 | 4 | 1 | 5 | 18 | 5 |
| EGIPTO | 213 | 71 | 15 | 86 | 0 | 0 | 0 | 0 | 1 | 1 | 20 | 3 | 23 | 4 | 1 | 5 | 15 | 5 |
| SERBIA | 157 | 46 | 32 | 78 | 5 | 2 | 7 | 1 | 2 | 3 | 2 | 0 | 2 | 2 | 1 | 3 | 5 | 5 |
| CAMERÚN | 208 | 52 | 23 | 75 | 0 | 0 | 0 | 2 | 0 | 2 | 12 | 5 | 17 | 6 | 2 | 8 | 11 | 9 |
| NICARAGUA | 323 | 31 | 39 | 70 | 4 | 4 | 8 | 3 | 0 | 3 | 3 | 4 | 7 | 0 | 0 | 0 | 4 | 6 |
| GHANA | 217 | 55 | 10 | 65 | 1 | 2 | 3 | 0 | 0 | 0 | 14 | 5 | 19 | 9 | 0 | 9 | 17 | 2 |
| CROACIA | 146 | 28 | 29 | 57 | 2 | 1 | 3 | 1 | 2 | 3 | 5 | 1 | 6 | 0 | 0 | 0 | 3 | 3 |
| TURQUÍA | 436 | 34 | 23 | 57 | 2 | 0 | 2 | 1 | 0 | 1 | 3 | 1 | 4 | 0 | 2 | 2 | 13 | 2 |
| GUINEA | 218 | 43 | 12 | 55 | 0 | 1 | 1 | 4 | 2 | 6 | 11 | 3 | 14 | 5 | 2 | 7 | 7 | 1 |
| ISLANDIA | 114 | 25 | 28 | 53 | 3 | 3 | 6 | 0 | 1 | 1 | 8 | 6 | 14 | 0 | 2 | 2 | 1 | 0 |
| ALBANIA | 101 | 32 | 20 | 52 | 4 | 6 | 10 | 0 | 1 | 1 | 3 | 0 | 3 | 2 | 1 | 3 | 4 | 0 |
| JAPÓN | 415 | 18 | 34 | 52 | 1 | 1 | 2 | 0 | 0 | 0 | 1 | 1 | 2 | 0 | 0 | 0 | 2 | 2 |
| TÚNEZ | 248 | 31 | 13 | 44 | 1 | 2 | 3 | 0 | 1 | 1 | 3 | 1 | 4 | 2 | 1 | 3 | 7 | 2 |
| COSTA DE MARFIL | 211 | 37 | 6 | 43 | 2 | 0 | 2 | 2 | 2 | 4 | 12 | 3 | 15 | 7 | 0 | 7 | 8 | 0 |

| | ESO/EGB | | | FP1 | | | Bach/FP2 | | | FP2 Mtria | | | BUP sup. | | | O.T.Med | | | Dipl E.Univ | | | Ing.Te | |
|----|---------|----|----|-----|---|---|----------|----|----|-----------|---|----|----------|----|----|---------|---|---|-------------|----|----|--------|---|
| 35 | 12 | 11 | 23 | 3 | 2 | 5 | 19 | 26 | 45 | 3 | 5 | 8 | 10 | 12 | 22 | 2 | 3 | 5 | 10 | 5 | 15 | 3 | 1 |
| 49 | 10 | 9 | 19 | 3 | 1 | 4 | 18 | 22 | 40 | 1 | 1 | 2 | 8 | 9 | 17 | 0 | 2 | 2 | 4 | 11 | 15 | 0 | 1 |
| 17 | 12 | 9 | 21 | 3 | 2 | 5 | 17 | 25 | 42 | 2 | 2 | 4 | 7 | 2 | 9 | 1 | 2 | 3 | 0 | 7 | 7 | 1 | 4 |
| 46 | 13 | 10 | 23 | 0 | 0 | 0 | 14 | 13 | 27 | 0 | 0 | 0 | 0 | 3 | 3 | 1 | 0 | 1 | 3 | 4 | 7 | 1 | 0 |
| 44 | 9 | 13 | 22 | 2 | 1 | 3 | 22 | 18 | 40 | 5 | 0 | 5 | 4 | 3 | 7 | 3 | 1 | 4 | 4 | 5 | 9 | 0 | 0 |
| 24 | 10 | 11 | 21 | 1 | 2 | 3 | 7 | 8 | 15 | 0 | 0 | 0 | 4 | 2 | 6 | 3 | 3 | 6 | 4 | 9 | 13 | 0 | 0 |
| 36 | 8 | 8 | 16 | 2 | 0 | 2 | 7 | 17 | 24 | 3 | 2 | 5 | 5 | 7 | 12 | 2 | 2 | 4 | 1 | 6 | 7 | 1 | 0 |
| 66 | 9 | 6 | 15 | 0 | 0 | 0 | 5 | 8 | 13 | 1 | 0 | 1 | 0 | 1 | 1 | 0 | 0 | 0 | 8 | 2 | 10 | 1 | 0 |
| 24 | 7 | 7 | 14 | 1 | 0 | 1 | 16 | 11 | 27 | 1 | 0 | 1 | 6 | 1 | 7 | 1 | 0 | 1 | 6 | 3 | 9 | 1 | 0 |
| 25 | 6 | 5 | 11 | 3 | 2 | 5 | 14 | 19 | 33 | 7 | 3 | 10 | 2 | 6 | 8 | 2 | 1 | 3 | 4 | 4 | 8 | 2 | 0 |
| 17 | 3 | 2 | 5 | 1 | 1 | 2 | 10 | 7 | 17 | 0 | 1 | 1 | 2 | 1 | 3 | 1 | 1 | 2 | 6 | 3 | 9 | 3 | 1 |
| 32 | 4 | 8 | 12 | 0 | 1 | 1 | 6 | 14 | 20 | 0 | 1 | 1 | 7 | 4 | 11 | 0 | 0 | 0 | 1 | 6 | 7 | 0 | 0 |
| 47 | 10 | 3 | 13 | 0 | 0 | 0 | 6 | 2 | 8 | 0 | 0 | 0 | 2 | 0 | 2 | 0 | 0 | 0 | 1 | 0 | 1 | 0 | 0 |
| 19 | 10 | 5 | 15 | 1 | 1 | 2 | 10 | 13 | 23 | 0 | 1 | 1 | 3 | 3 | 6 | 3 | 1 | 4 | 5 | 5 | 10 | 3 | 0 |
| 24 | 3 | 3 | 6 | 1 | 0 | 1 | 4 | 4 | 8 | 0 | 0 | 0 | 2 | 1 | 3 | 0 | 0 | 0 | 2 | 2 | 4 | 1 | 0 |
| 21 | 4 | 2 | 6 | 0 | 1 | 1 | 11 | 10 | 21 | 0 | 2 | 2 | 4 | 5 | 9 | 0 | 0 | 0 | 0 | 3 | 3 | 0 | 0 |
| 10 | 3 | 7 | 10 | 1 | 0 | 1 | 9 | 7 | 16 | 0 | 1 | 1 | 0 | 4 | 4 | 0 | 0 | 0 | 0 | 2 | 2 | 0 | 0 |
| 15 | 2 | 6 | 8 | 0 | 0 | 0 | 6 | 3 | 9 | 0 | 0 | 0 | 4 | 3 | 7 | 0 | 1 | 1 | 2 | 1 | 3 | 0 | 0 |
| 18 | 4 | 3 | 7 | 0 | 0 | 0 | 1 | 7 | 8 | 1 | 1 | 2 | 3 | 3 | 6 | 1 | 0 | 1 | 2 | 2 | 4 | 0 | 0 |
| 11 | 3 | 2 | 5 | 1 | 0 | 1 | 9 | 10 | 19 | 1 | 0 | 1 | 2 | 5 | 7 | 0 | 1 | 1 | 0 | 1 | 1 | 0 | 0 |
| 23 | 3 | 4 | 7 | 1 | 1 | 2 | 3 | 10 | 13 | 0 | 0 | 0 | 0 | 5 | 5 | 0 | 3 | 3 | 1 | 5 | 6 | 0 | 0 |
| 12 | 7 | 6 | 13 | 1 | 0 | 1 | 6 | 13 | 19 | 1 | 1 | 2 | 2 | 2 | 4 | 1 | 1 | 2 | 1 | 2 | 3 | 0 | 0 |
| 15 | 2 | 0 | 2 | 1 | 2 | 3 | 7 | 8 | 15 | 0 | 0 | 0 | 3 | 1 | 4 | 0 | 0 | 0 | 0 | 5 | 5 | 1 | 0 |
| 9 | 4 | 2 | 6 | 0 | 0 | 0 | 6 | 10 | 16 | 1 | 0 | 1 | 2 | 1 | 3 | 1 | 0 | 1 | 3 | 3 | 6 | 1 | 0 |
| 22 | 5 | 4 | 9 | 1 | 2 | 3 | 2 | 13 | 15 | 1 | 0 | 1 | 1 | 3 | 4 | 0 | 0 | 0 | 1 | 0 | 1 | 0 | 0 |
| 23 | 3 | 1 | 4 | 1 | 0 | 1 | 1 | 1 | 2 | 0 | 0 | 0 | 0 | 0 | 0 | 0 | 0 | 0 | 0 | 0 | 0 | 0 | 0 |
| 20 | 4 | 0 | 4 | 3 | 0 | 3 | 8 | 0 | 8 | 0 | 1 | 1 | 2 | 0 | 2 | 1 | 0 | 1 | 3 | 0 | 3 | 1 | 0 |
| 10 | 3 | 1 | 4 | 0 | 1 | 1 | 8 | 3 | 11 | 2 | 0 | 2 | 3 | 2 | 5 | 0 | 1 | 1 | 1 | 2 | 3 | 0 | 1 |
| 20 | 4 | 3 | 7 | 1 | 0 | 1 | 6 | 1 | 7 | 0 | 1 | 1 | 2 | 2 | 4 | 0 | 0 | 0 | 2 | 0 | 2 | 0 | 0 |
| 10 | 5 | 3 | 8 | 0 | 0 | 0 | 6 | 11 | 17 | 2 | 0 | 2 | 1 | 1 | 2 | 0 | 1 | 1 | 1 | 1 | 2 | 0 | 0 |
| 19 | 7 | 0 | 7 | 0 | 0 | 0 | 3 | 0 | 3 | 1 | 0 | 1 | 0 | 0 | 0 | 0 | 0 | 0 | 0 | 0 | 0 | 0 | 0 |
| 6 | 4 | 3 | 7 | 0 | 0 | 0 | 5 | 4 | 9 | 2 | 0 | 2 | 1 | 4 | 5 | 0 | 0 | 0 | 1 | 1 | 2 | 0 | 0 |
| 15 | 3 | 2 | 5 | 2 | 0 | 2 | 2 | 3 | 5 | 0 | 1 | 1 | 0 | 2 | 2 | 0 | 0 | 0 | 2 | 3 | 5 | 0 | 0 |
| 8 | 6 | 1 | 7 | 0 | 0 | 0 | 4 | 0 | 4 | 1 | 1 | 2 | 1 | 1 | 2 | 0 | 0 | 0 | 2 | 0 | 2 | 0 | 0 |
| 1 | 1 | 3 | 4 | 0 | 0 | 0 | 5 | 5 | 10 | 0 | 0 | 0 | 1 | 2 | 3 | 0 | 0 | 0 | 0 | 1 | 1 | 0 | 0 |
| 4 | 4 | 1 | 5 | 0 | 0 | 0 | 8 | 2 | 10 | 1 | 2 | 3 | 2 | 0 | 2 | 0 | 0 | 0 | 0 | 1 | 1 | 0 | 0 |
| 4 | 2 | 1 | 3 | 0 | 1 | 1 | 5 | 6 | 11 | 0 | 0 | 0 | 1 | 3 | 4 | 0 | 1 | 1 | 1 | 4 | 5 | 0 | 0 |
| 9 | 5 | 1 | 6 | 0 | 0 | 0 | 6 | 0 | 6 | 0 | 0 | 0 | 2 | 0 | 2 | 0 | 0 | 0 | 0 | 1 | 1 | 0 | 0 |
| 8 | 3 | 0 | 3 | 1 | 0 | 1 | 1 | 1 | 2 | 0 | 0 | 0 | 0 | 0 | 0 | 0 | 0 | 0 | 0 | 0 | 0 | 0 | 0 |

| c | Ing.Sup | | | Tit.Sup | | | Doctor | | |
|---|---------|----|----|---------|----|----|--------|---|----|
| | | | | | | | | | |
| 4 | 17 | 19 | 36 | 4 | 4 | 8 | 5 | 5 | 10 |
| 1 | 19 | 22 | 41 | 1 | 5 | 6 | 1 | 1 | 2 |
| 5 | 27 | 35 | 62 | 5 | 11 | 16 | 4 | 9 | 13 |
| 1 | 12 | 3 | 15 | 0 | 1 | 1 | 2 | 1 | 3 |
| 0 | 17 | 13 | 30 | 3 | 6 | 9 | 2 | 2 | 4 |
| 0 | 17 | 27 | 44 | 6 | 9 | 15 | 0 | 0 | 0 |
| 1 | 12 | 11 | 23 | 2 | 5 | 7 | 1 | 2 | 3 |
| 1 | 6 | 3 | 9 | 2 | 0 | 2 | 1 | 0 | 1 |
| 1 | 30 | 16 | 46 | 7 | 9 | 16 | 6 | 1 | 7 |
| 2 | 13 | 9 | 22 | 4 | 2 | 6 | 3 | 1 | 4 |
| 4 | 22 | 23 | 45 | 6 | 9 | 15 | 3 | 6 | 9 |
| 0 | 9 | 26 | 35 | 0 | 3 | 3 | 2 | 3 | 5 |
| 0 | 1 | 4 | 5 | 0 | 0 | 0 | 0 | 1 | 1 |
| 3 | 12 | 14 | 26 | 4 | 2 | 6 | 0 | 1 | 1 |
| 1 | 12 | 14 | 26 | 2 | 2 | 4 | 1 | 0 | 1 |
| 0 | 9 | 10 | 19 | 4 | 2 | 6 | 2 | 1 | 3 |
| 0 | 10 | 11 | 21 | 1 | 4 | 5 | 0 | 3 | 3 |
| 0 | 14 | 11 | 25 | 6 | 4 | 10 | 4 | 4 | 8 |
| 0 | 7 | 20 | 27 | 0 | 2 | 2 | 0 | 3 | 3 |
| 0 | 12 | 14 | 26 | 2 | 4 | 6 | 1 | 1 | 2 |
| 0 | 6 | 8 | 14 | 2 | 3 | 5 | 0 | 1 | 1 |
| 0 | 1 | 6 | 7 | 1 | 2 | 3 | 1 | 0 | 1 |
| 1 | 4 | 7 | 11 | 3 | 4 | 7 | 0 | 0 | 0 |
| 1 | 10 | 9 | 19 | 1 | 4 | 5 | 2 | 2 | 4 |
| 0 | 2 | 5 | 7 | 0 | 0 | 0 | 0 | 0 | 0 |
| 0 | 0 | 0 | 0 | 0 | 0 | 0 | 0 | 0 | 0 |
| 1 | 7 | 3 | 10 | 3 | 0 | 3 | 0 | 1 | 1 |
| 1 | 10 | 4 | 14 | 2 | 2 | 4 | 2 | 5 | 7 |
| 0 | 1 | 0 | 1 | 4 | 0 | 4 | 1 | 0 | 1 |
| 0 | 2 | 6 | 8 | 0 | 1 | 1 | 0 | 1 | 1 |
| 0 | 3 | 0 | 3 | 0 | 0 | 0 | 0 | 1 | 1 |
| 0 | 3 | 9 | 12 | 0 | 1 | 1 | 1 | 0 | 1 |
| 0 | 3 | 4 | 7 | 2 | 3 | 5 | 1 | 0 | 1 |
| 0 | 2 | 0 | 2 | 0 | 0 | 0 | 0 | 0 | 0 |
| 0 | 5 | 2 | 7 | 1 | 3 | 4 | 0 | 0 | 0 |
| 0 | 1 | 3 | 4 | 2 | 2 | 4 | 1 | 1 | 2 |
| 0 | 5 | 9 | 14 | 0 | 3 | 3 | 0 | 2 | 2 |
| 0 | 4 | 2 | 6 | 1 | 2 | 3 | 0 | 0 | 0 |
| 0 | 1 | 0 | 1 | 0 | 0 | 0 | 0 | 0 | 0 |

| Nacionalidad | | Total | | | < 10 a | | | No sabe L/E | | | S/estudios | | | < 5º EGB | | | G.Esc | |
|---------------------------|-----|-------|----|----|--------|---|---|-------------|---|---|------------|---|----|----------|---|---|-------|---|
| VIETNAM | 437 | 17 | 23 | 40 | 2 | 2 | 4 | 0 | 1 | 1 | 3 | 2 | 5 | 1 | 1 | 2 | 2 | 6 |
| LIBIA | 224 | 22 | 17 | 39 | 6 | 1 | 7 | 4 | 1 | 5 | 2 | 8 | 10 | 0 | 1 | 1 | 1 | 3 |
| GUINEA-BISSAU | 219 | 23 | 12 | 35 | 0 | 0 | 0 | 0 | 0 | 0 | 6 | 3 | 9 | 4 | 1 | 5 | 3 | 3 |
| JORDANIA | 416 | 20 | 13 | 33 | 2 | 0 | 2 | 0 | 0 | 0 | 5 | 6 | 11 | 0 | 0 | 0 | 2 | 4 |
| APÁTRIDAS | 555 | 20 | 12 | 32 | 0 | 0 | 0 | 2 | 3 | 5 | 6 | 1 | 7 | 1 | 0 | 1 | 3 | 3 |
| ESLOVENIA | 147 | 10 | 22 | 32 | 1 | 1 | 2 | 1 | 0 | 1 | 1 | 3 | 4 | 0 | 0 | 0 | 1 | 3 |
| AUSTRALIA | 501 | 15 | 16 | 31 | 0 | 0 | 0 | 0 | 0 | 0 | 1 | 2 | 3 | 0 | 0 | 0 | 3 | 1 |
| GUATEMALA | 319 | 13 | 16 | 29 | 3 | 1 | 4 | 0 | 0 | 0 | 3 | 1 | 4 | 1 | 0 | 1 | 0 | 5 |
| MACEDONIA | 156 | 16 | 12 | 28 | 4 | 3 | 7 | 0 | 1 | 1 | 1 | 1 | 2 | 0 | 0 | 0 | 4 | 2 |
| PALESTINA | 449 | 19 | 9 | 28 | 0 | 0 | 0 | 0 | 1 | 1 | 5 | 4 | 9 | 0 | 0 | 0 | 4 | 1 |
| AZERBAIYÁN | 442 | 11 | 16 | 27 | 0 | 2 | 2 | 0 | 0 | 0 | 4 | 5 | 9 | 0 | 1 | 1 | 1 | 4 |
| REP.DEMOCRÁTICA DEL CONGO | 250 | 15 | 12 | 27 | 1 | 0 | 1 | 0 | 1 | 1 | 2 | 4 | 6 | 0 | 0 | 0 | 10 | 6 |
| GAMBIA | 216 | 25 | 1 | 26 | 0 | 0 | 0 | 1 | 0 | 1 | 13 | 0 | 13 | 2 | 1 | 3 | 5 | 0 |
| INDONESIA | 411 | 10 | 16 | 26 | 0 | 1 | 1 | 0 | 1 | 1 | 3 | 1 | 4 | 1 | 0 | 1 | 1 | 3 |
| MAURITANIA | 230 | 15 | 11 | 26 | 0 | 0 | 0 | 0 | 0 | 0 | 9 | 4 | 13 | 1 | 0 | 1 | 4 | 3 |
| COREA | 430 | 10 | 15 | 25 | 0 | 1 | 1 | 0 | 0 | 0 | 0 | 2 | 2 | 0 | 1 | 1 | 0 | 1 |
| IRAK | 412 | 15 | 9 | 24 | 0 | 2 | 2 | 0 | 0 | 0 | 2 | 1 | 3 | 2 | 0 | 2 | 4 | 1 |
| COSTA RICA | 314 | 12 | 11 | 23 | 0 | 0 | 0 | 0 | 0 | 0 | 0 | 3 | 3 | 0 | 1 | 1 | 2 | 0 |
| ARABIA SAUDÍ | 402 | 14 | 8 | 22 | 3 | 1 | 4 | 1 | 1 | 2 | 2 | 1 | 3 | 1 | 0 | 1 | 1 | 2 |
| NEPAL | 424 | 14 | 8 | 22 | 0 | 0 | 0 | 0 | 1 | 1 | 3 | 3 | 6 | 1 | 0 | 1 | 3 | 1 |
| LUXEMBURGO | 117 | 9 | 12 | 21 | 2 | 1 | 3 | 1 | 0 | 1 | 1 | 1 | 2 | 0 | 0 | 0 | 2 | 0 |
| CONGO | 210 | 15 | 5 | 20 | 0 | 0 | 0 | 0 | 0 | 0 | 2 | 1 | 3 | 2 | 1 | 3 | 5 | 3 |
| AFGANISTÁN | 401 | 13 | 6 | 19 | 0 | 0 | 0 | 0 | 1 | 1 | 2 | 2 | 4 | 0 | 0 | 0 | 3 | 0 |
| PANAMÁ | 324 | 6 | 13 | 19 | 2 | 2 | 4 | 0 | 0 | 0 | 0 | 0 | 0 | 0 | 0 | 0 | 0 | 2 |
| ETIOPIA | 214 | 8 | 9 | 17 | 0 | 0 | 0 | 1 | 2 | 3 | 2 | 4 | 6 | 0 | 1 | 1 | 3 | 1 |
| SUDÁFRICA | 236 | 7 | 9 | 16 | 0 | 0 | 0 | 0 | 1 | 1 | 0 | 0 | 0 | 0 | 0 | 0 | 1 | 0 |
| ANGOLA | 202 | 7 | 7 | 14 | 0 | 1 | 1 | 1 | 0 | 1 | 1 | 4 | 5 | 1 | 0 | 1 | 2 | 2 |
| BOSNIA-HERZEGOVINA | 145 | 7 | 5 | 12 | 1 | 1 | 2 | 0 | 0 | 0 | 2 | 2 | 4 | 1 | 0 | 1 | 1 | 1 |
| ANTIGUOS TERRIT.DE S.ESP. | 966 | 7 | 4 | 11 | 1 | 0 | 1 | 0 | 0 | 0 | 2 | 0 | 2 | 0 | 0 | 0 | 1 | 1 |
| ISRAEL | 414 | 5 | 6 | 11 | 0 | 1 | 1 | 0 | 1 | 1 | 1 | 1 | 2 | 0 | 0 | 0 | 0 | 0 |
| HAÍTÍ | 320 | 3 | 7 | 10 | 1 | 0 | 1 | 0 | 0 | 0 | 0 | 1 | 1 | 0 | 1 | 1 | 0 | 1 |
| NUEVA ZELANDA | 504 | 5 | 4 | 9 | 2 | 1 | 3 | 0 | 0 | 0 | 0 | 0 | 0 | 0 | 0 | 0 | 0 | 0 |
| UZBEKISTÁN | 447 | 4 | 5 | 9 | 0 | 0 | 0 | 0 | 0 | 0 | 3 | 1 | 4 | 0 | 0 | 0 | 0 | 2 |
| KIRGUISTÁN | 444 | 1 | 7 | 8 | 1 | 0 | 1 | 0 | 0 | 0 | 0 | 1 | 1 | 0 | 0 | 0 | 0 | 0 |
| LIBERIA | 223 | 8 | 0 | 8 | 0 | 0 | 0 | 1 | 0 | 1 | 4 | 0 | 4 | 1 | 0 | 1 | 2 | 0 |
| MALTA | 118 | 4 | 4 | 8 | 0 | 0 | 0 | 0 | 0 | 0 | 0 | 0 | 0 | 0 | 0 | 0 | 0 | 1 |
| MONTENEGRO | 158 | 4 | 4 | 8 | 0 | 0 | 0 | 0 | 0 | 0 | 2 | 0 | 2 | 0 | 0 | 0 | 0 | 0 |
| YEMEN | 441 | 7 | 1 | 8 | 0 | 0 | 0 | 0 | 0 | 0 | 2 | 0 | 2 | 0 | 0 | 0 | 2 | 0 |
| CHIPRE | 106 | 1 | 6 | 7 | 0 | 0 | 0 | 0 | 0 | 0 | 0 | 0 | 0 | 0 | 0 | 0 | 0 | 1 |

| | ESO/EGB | | | FP1 | | | Bach/FP2 | | | FP2 Mtria | | | BUP sup. | | | O.T.Med | | | Dipl E.Univ | | | Ing.Te | |
|----|---------|---|---|-----|---|---|----------|---|----|-----------|---|---|----------|---|---|---------|---|---|-------------|---|---|--------|---|
| 8 | 2 | 2 | 4 | 0 | 0 | 0 | 5 | 5 | 10 | 0 | 0 | 0 | 1 | 0 | 1 | 0 | 0 | 0 | 0 | 1 | 1 | 0 | 0 |
| 4 | 0 | 0 | 0 | 0 | 0 | 0 | 1 | 0 | 1 | 0 | 0 | 0 | 2 | 0 | 2 | 0 | 0 | 0 | 1 | 1 | 2 | 0 | 0 |
| 6 | 3 | 1 | 4 | 1 | 0 | 1 | 5 | 3 | 8 | 0 | 0 | 0 | 0 | 1 | 1 | 0 | 0 | 0 | 1 | 0 | 1 | 0 | 0 |
| 6 | 1 | 1 | 2 | 0 | 0 | 0 | 4 | 1 | 5 | 0 | 0 | 0 | 0 | 1 | 1 | 0 | 0 | 0 | 0 | 0 | 0 | 0 | 0 |
| 6 | 2 | 1 | 3 | 1 | 0 | 1 | 3 | 2 | 5 | 0 | 0 | 0 | 1 | 0 | 1 | 0 | 0 | 0 | 0 | 0 | 0 | 0 | 0 |
| 4 | 0 | 1 | 1 | 1 | 0 | 1 | 1 | 0 | 1 | 0 | 0 | 0 | 1 | 1 | 2 | 0 | 0 | 0 | 1 | 1 | 2 | 0 | 0 |
| 4 | 2 | 1 | 3 | 0 | 0 | 0 | 5 | 3 | 8 | 0 | 2 | 2 | 1 | 2 | 3 | 0 | 0 | 0 | 1 | 0 | 1 | 0 | 0 |
| 5 | 0 | 2 | 2 | 0 | 0 | 0 | 1 | 2 | 3 | 0 | 0 | 0 | 0 | 1 | 1 | 1 | 0 | 1 | 2 | 1 | 3 | 0 | 0 |
| 6 | 1 | 0 | 1 | 1 | 0 | 1 | 0 | 0 | 0 | 0 | 0 | 0 | 0 | 0 | 0 | 0 | 0 | 0 | 0 | 0 | 0 | 0 | 0 |
| 5 | 0 | 2 | 2 | 0 | 0 | 0 | 2 | 1 | 3 | 0 | 0 | 0 | 0 | 0 | 0 | 0 | 0 | 0 | 3 | 0 | 3 | 0 | 0 |
| 5 | 2 | 0 | 2 | 0 | 0 | 0 | 0 | 2 | 2 | 0 | 0 | 0 | 0 | 1 | 1 | 0 | 0 | 0 | 0 | 0 | 0 | 0 | 0 |
| 16 | 2 | 0 | 2 | 0 | 0 | 0 | 0 | 0 | 0 | 0 | 0 | 0 | 0 | 0 | 0 | 0 | 0 | 0 | 0 | 1 | 1 | 0 | 0 |
| 5 | 1 | 0 | 1 | 1 | 0 | 1 | 1 | 0 | 1 | 0 | 0 | 0 | 1 | 0 | 1 | 0 | 0 | 0 | 0 | 0 | 0 | 0 | 0 |
| 4 | 0 | 0 | 0 | 1 | 2 | 3 | 2 | 5 | 7 | 0 | 0 | 0 | 0 | 0 | 0 | 0 | 1 | 1 | 0 | 0 | 0 | 0 | 0 |
| 7 | 0 | 1 | 1 | 0 | 0 | 0 | 1 | 0 | 1 | 0 | 0 | 0 | 0 | 0 | 0 | 0 | 0 | 0 | 0 | 0 | 0 | 0 | 0 |
| 1 | 1 | 2 | 3 | 0 | 0 | 0 | 2 | 1 | 3 | 0 | 0 | 0 | 0 | 0 | 0 | 0 | 1 | 1 | 0 | 1 | 1 | 0 | 0 |
| 5 | 1 | 1 | 2 | 0 | 0 | 0 | 0 | 1 | 1 | 1 | 0 | 1 | 1 | 0 | 1 | 0 | 0 | 0 | 1 | 2 | 3 | 0 | 0 |
| 2 | 1 | 0 | 1 | 0 | 1 | 1 | 0 | 0 | 0 | 2 | 0 | 2 | 0 | 1 | 1 | 0 | 0 | 0 | 2 | 1 | 3 | 0 | 0 |
| 3 | 0 | 0 | 0 | 0 | 0 | 0 | 1 | 2 | 3 | 0 | 0 | 0 | 1 | 0 | 1 | 0 | 0 | 0 | 0 | 0 | 0 | 1 | 0 |
| 4 | 3 | 2 | 5 | 0 | 0 | 0 | 3 | 1 | 4 | 0 | 0 | 0 | 0 | 0 | 0 | 0 | 0 | 0 | 1 | 0 | 1 | 0 | 0 |
| 2 | 0 | 0 | 0 | 0 | 0 | 0 | 2 | 5 | 7 | 0 | 0 | 0 | 0 | 1 | 1 | 0 | 0 | 0 | 0 | 0 | 0 | 0 | 0 |
| 8 | 0 | 0 | 0 | 0 | 0 | 0 | 3 | 0 | 3 | 0 | 0 | 0 | 2 | 0 | 2 | 0 | 0 | 0 | 0 | 0 | 0 | 0 | 0 |
| 3 | 2 | 0 | 2 | 0 | 0 | 0 | 1 | 0 | 1 | 0 | 0 | 0 | 4 | 3 | 7 | 0 | 0 | 0 | 1 | 0 | 1 | 0 | 0 |
| 2 | 1 | 0 | 1 | 0 | 0 | 0 | 0 | 2 | 2 | 0 | 0 | 0 | 1 | 3 | 4 | 0 | 0 | 0 | 0 | 2 | 2 | 1 | 0 |
| 4 | 0 | 0 | 0 | 0 | 0 | 0 | 2 | 1 | 3 | 0 | 0 | 0 | 0 | 0 | 0 | 0 | 0 | 0 | 0 | 0 | 0 | 0 | 0 |
| 1 | 2 | 1 | 3 | 0 | 0 | 0 | 1 | 1 | 2 | 0 | 0 | 0 | 0 | 0 | 0 | 0 | 0 | 0 | 0 | 2 | 2 | 0 | 0 |
| 4 | 1 | 0 | 1 | 0 | 0 | 0 | 1 | 0 | 1 | 0 | 0 | 0 | 0 | 0 | 0 | 0 | 0 | 0 | 0 | 0 | 0 | 0 | 0 |
| 2 | 0 | 0 | 0 | 2 | 0 | 2 | 0 | 1 | 1 | 0 | 0 | 0 | 0 | 0 | 0 | 0 | 0 | 0 | 0 | 0 | 0 | 0 | 0 |
| 2 | 2 | 0 | 2 | 0 | 0 | 0 | 1 | 2 | 3 | 0 | 0 | 0 | 0 | 1 | 1 | 0 | 0 | 0 | 0 | 0 | 0 | 0 | 0 |
| 0 | 3 | 1 | 4 | 0 | 0 | 0 | 0 | 0 | 0 | 0 | 0 | 0 | 0 | 0 | 0 | 1 | 0 | 1 | 0 | 0 | 0 | 0 | 0 |
| 1 | 0 | 3 | 3 | 0 | 0 | 0 | 0 | 1 | 1 | 1 | 0 | 1 | 0 | 0 | 0 | 0 | 0 | 0 | 0 | 0 | 0 | 0 | 0 |
| 0 | 0 | 0 | 0 | 0 | 0 | 0 | 1 | 1 | 2 | 1 | 0 | 1 | 0 | 0 | 0 | 0 | 0 | 0 | 0 | 0 | 0 | 0 | 0 |
| 2 | 0 | 0 | 0 | 0 | 0 | 0 | 1 | 1 | 2 | 0 | 0 | 0 | 0 | 0 | 0 | 0 | 0 | 0 | 0 | 0 | 0 | 0 | 0 |
| 0 | 0 | 0 | 0 | 0 | 0 | 0 | 0 | 2 | 2 | 0 | 0 | 0 | 0 | 1 | 1 | 0 | 0 | 0 | 0 | 0 | 0 | 0 | 0 |
| 2 | 0 | 0 | 0 | 0 | 0 | 0 | 0 | 0 | 0 | 0 | 0 | 0 | 0 | 0 | 0 | 0 | 0 | 0 | 0 | 0 | 0 | 0 | 0 |
| 1 | 0 | 0 | 0 | 0 | 0 | 0 | 1 | 0 | 1 | 0 | 0 | 0 | 0 | 0 | 0 | 0 | 0 | 0 | 0 | 0 | 0 | 0 | 0 |
| 0 | 0 | 1 | 1 | 0 | 0 | 0 | 1 | 0 | 1 | 0 | 0 | 0 | 1 | 0 | 1 | 0 | 0 | 0 | 0 | 0 | 0 | 0 | 0 |
| 2 | 1 | 1 | 2 | 0 | 0 | 0 | 0 | 0 | 0 | 0 | 0 | 0 | 0 | 0 | 0 | 0 | 0 | 0 | 0 | 0 | 0 | 0 | 0 |
| 1 | 0 | 1 | 1 | 1 | 1 | 2 | 0 | 1 | 1 | 0 | 0 | 0 | 0 | 0 | 0 | 0 | 0 | 0 | 0 | 0 | 0 | 0 | 0 |

| c | Ing.Sup | | | Tit.Sup | | | Doctor | | |
|---|---------|----|----|---------|---|---|--------|---|---|
| | | | | | | | | | |
| 0 | 1 | 3 | 4 | 0 | 0 | 0 | 0 | 0 | 0 |
| 0 | 2 | 1 | 3 | 2 | 0 | 2 | 1 | 1 | 2 |
| 0 | 0 | 0 | 0 | 0 | 0 | 0 | 0 | 0 | 0 |
| 0 | 1 | 0 | 1 | 1 | 0 | 1 | 4 | 0 | 4 |
| 0 | 1 | 2 | 3 | 0 | 0 | 0 | 0 | 0 | 0 |
| 0 | 1 | 10 | 11 | 0 | 0 | 0 | 1 | 2 | 3 |
| 0 | 2 | 4 | 6 | 0 | 1 | 1 | 0 | 0 | 0 |
| 0 | 2 | 2 | 4 | 0 | 1 | 1 | 0 | 0 | 0 |
| 0 | 3 | 2 | 5 | 2 | 2 | 4 | 0 | 1 | 1 |
| 0 | 4 | 0 | 4 | 1 | 0 | 1 | 0 | 0 | 0 |
| 0 | 4 | 1 | 5 | 0 | 0 | 0 | 0 | 0 | 0 |
| 0 | 0 | 0 | 0 | 0 | 0 | 0 | 0 | 0 | 0 |
| 0 | 0 | 0 | 0 | 0 | 0 | 0 | 0 | 0 | 0 |
| 0 | 2 | 1 | 3 | 0 | 0 | 0 | 0 | 1 | 1 |
| 0 | 0 | 2 | 2 | 0 | 0 | 0 | 0 | 1 | 1 |
| 0 | 5 | 4 | 9 | 1 | 0 | 1 | 1 | 1 | 2 |
| 0 | 1 | 1 | 2 | 1 | 0 | 1 | 1 | 0 | 1 |
| 0 | 3 | 3 | 6 | 0 | 1 | 1 | 2 | 0 | 2 |
| 1 | 2 | 1 | 3 | 0 | 0 | 0 | 1 | 0 | 1 |
| 0 | 0 | 0 | 0 | 0 | 0 | 0 | 0 | 0 | 0 |
| 0 | 0 | 3 | 3 | 1 | 0 | 1 | 0 | 1 | 1 |
| 0 | 1 | 0 | 1 | 0 | 0 | 0 | 0 | 0 | 0 |
| 0 | 0 | 0 | 0 | 0 | 0 | 0 | 0 | 0 | 0 |
| 1 | 1 | 1 | 2 | 0 | 0 | 0 | 0 | 1 | 1 |
| 0 | 0 | 0 | 0 | 0 | 0 | 0 | 0 | 0 | 0 |
| 0 | 2 | 3 | 5 | 0 | 0 | 0 | 1 | 1 | 2 |
| 0 | 0 | 0 | 0 | 0 | 0 | 0 | 0 | 0 | 0 |
| 0 | 0 | 0 | 0 | 0 | 0 | 0 | 0 | 0 | 0 |
| 0 | 0 | 0 | 0 | 0 | 0 | 0 | 0 | 0 | 0 |
| 0 | 0 | 2 | 2 | 0 | 0 | 0 | 0 | 0 | 0 |
| 0 | 0 | 0 | 0 | 1 | 0 | 1 | 0 | 0 | 0 |
| 0 | 0 | 2 | 2 | 1 | 0 | 1 | 0 | 0 | 0 |
| 0 | 0 | 0 | 0 | 0 | 1 | 1 | 0 | 0 | 0 |
| 0 | 0 | 1 | 1 | 0 | 0 | 0 | 0 | 2 | 2 |
| 0 | 0 | 0 | 0 | 0 | 0 | 0 | 0 | 0 | 0 |
| 0 | 2 | 2 | 4 | 0 | 0 | 0 | 1 | 1 | 2 |
| 0 | 0 | 1 | 1 | 0 | 2 | 2 | 0 | 0 | 0 |
| 0 | 1 | 0 | 1 | 1 | 0 | 1 | 0 | 0 | 0 |
| 0 | 0 | 2 | 2 | 0 | 0 | 0 | 0 | 0 | 0 |

| Nacionalidad | | Total | | | < 10 a | | | No sabe L/E | | | S/estudios | | | < 5º EGB | | | G.Esc | |
|--------------------------|-----|-------|---|---|--------|---|---|-------------|---|---|------------|---|---|----------|---|---|-------|---|
| TAILANDIA | 435 | 2 | 5 | 7 | 0 | 0 | 0 | 0 | 0 | 0 | 0 | 0 | 0 | 0 | 0 | 0 | 0 | 2 |
| VANUATU | 509 | 4 | 3 | 7 | 0 | 0 | 0 | 0 | 0 | 0 | 1 | 0 | 1 | 0 | 0 | 0 | 1 | 1 |
| SIERRA LEONA | 241 | 4 | 2 | 6 | 0 | 0 | 0 | 0 | 0 | 0 | 1 | 2 | 3 | 0 | 0 | 0 | 0 | 0 |
| JAMAICA | 322 | 4 | 1 | 5 | 0 | 0 | 0 | 0 | 0 | 0 | 1 | 0 | 1 | 0 | 0 | 0 | 1 | 1 |
| KENIA | 221 | 0 | 5 | 5 | 0 | 0 | 0 | 0 | 0 | 0 | 0 | 0 | 0 | 0 | 1 | 1 | 0 | 1 |
| SUDÁN | 243 | 2 | 3 | 5 | 0 | 0 | 0 | 0 | 1 | 1 | 0 | 1 | 1 | 0 | 0 | 0 | 0 | 0 |
| ZIMBABWE | 252 | 2 | 3 | 5 | 1 | 1 | 2 | 0 | 0 | 0 | 0 | 0 | 0 | 0 | 0 | 0 | 0 | 0 |
| ANDORRA | 124 | 2 | 2 | 4 | 0 | 2 | 2 | 0 | 0 | 0 | 0 | 0 | 0 | 0 | 0 | 0 | 0 | 0 |
| BENIN | 204 | 3 | 1 | 4 | 0 | 0 | 0 | 0 | 0 | 0 | 0 | 1 | 1 | 0 | 0 | 0 | 0 | 0 |
| BURKINA FASO | 201 | 4 | 0 | 4 | 0 | 0 | 0 | 0 | 0 | 0 | 1 | 0 | 1 | 0 | 0 | 0 | 0 | 0 |
| CABO VERDE | 207 | 3 | 1 | 4 | 0 | 0 | 0 | 0 | 0 | 0 | 1 | 0 | 1 | 0 | 0 | 0 | 1 | 1 |
| COMORES | 209 | 2 | 1 | 3 | 0 | 0 | 0 | 1 | 0 | 1 | 0 | 0 | 0 | 0 | 0 | 0 | 0 | 0 |
| DOMINICA | 316 | 3 | 0 | 3 | 0 | 0 | 0 | 0 | 0 | 0 | 0 | 0 | 0 | 0 | 0 | 0 | 1 | 0 |
| MONGOLIA | 423 | 0 | 3 | 3 | 0 | 0 | 0 | 0 | 0 | 0 | 0 | 0 | 0 | 0 | 0 | 0 | 0 | 1 |
| CHAD | 246 | 2 | 0 | 2 | 0 | 0 | 0 | 0 | 0 | 0 | 1 | 0 | 1 | 0 | 0 | 0 | 0 | 0 |
| EMIRATOS ÁRABES UNIDOS | 408 | 1 | 1 | 2 | 0 | 0 | 0 | 0 | 0 | 0 | 0 | 0 | 0 | 0 | 0 | 0 | 0 | 1 |
| MALASIA | 421 | 1 | 1 | 2 | 0 | 0 | 0 | 0 | 0 | 0 | 0 | 0 | 0 | 0 | 0 | 0 | 0 | 0 |
| MOZAMBIQUE | 231 | 1 | 1 | 2 | 0 | 0 | 0 | 0 | 0 | 0 | 1 | 0 | 1 | 0 | 1 | 1 | 0 | 0 |
| MYANMAR | 405 | 2 | 0 | 2 | 0 | 0 | 0 | 0 | 0 | 0 | 0 | 0 | 0 | 0 | 0 | 0 | 0 | 0 |
| REPÚBLICA CENTROAFRICANA | 235 | 2 | 0 | 2 | 0 | 0 | 0 | 0 | 0 | 0 | 0 | 0 | 0 | 0 | 0 | 0 | 1 | 0 |
| SINGAPUR | 432 | 0 | 2 | 2 | 0 | 0 | 0 | 0 | 0 | 0 | 0 | 0 | 0 | 0 | 0 | 0 | 0 | 0 |
| SOMALIA | 242 | 1 | 1 | 2 | 0 | 0 | 0 | 0 | 0 | 0 | 1 | 0 | 1 | 0 | 0 | 0 | 0 | 1 |
| TOGO | 247 | 1 | 1 | 2 | 0 | 0 | 0 | 0 | 0 | 0 | 0 | 0 | 0 | 0 | 0 | 0 | 0 | 1 |
| TURKMENISTÁN | 446 | 2 | 0 | 2 | 0 | 0 | 0 | 0 | 0 | 0 | 0 | 0 | 0 | 0 | 0 | 0 | 0 | 0 |
| ANTIGUA Y BARBUDA | 310 | 0 | 1 | 1 | 0 | 0 | 0 | 0 | 0 | 0 | 0 | 1 | 1 | 0 | 0 | 0 | 0 | 0 |
| ERITREA | 253 | 1 | 0 | 1 | 0 | 0 | 0 | 0 | 0 | 0 | 0 | 0 | 0 | 0 | 0 | 0 | 0 | 0 |
| GUYANA | 346 | 0 | 1 | 1 | 0 | 0 | 0 | 0 | 0 | 0 | 0 | 0 | 0 | 0 | 0 | 0 | 0 | 0 |
| MADAGASCAR | 225 | 1 | 0 | 1 | 0 | 0 | 0 | 0 | 0 | 0 | 1 | 0 | 1 | 0 | 0 | 0 | 0 | 0 |
| MALDIVAS | 422 | 0 | 1 | 1 | 0 | 0 | 0 | 0 | 0 | 0 | 0 | 0 | 0 | 0 | 0 | 0 | 0 | 1 |
| MAURICIO | 229 | 1 | 0 | 1 | 0 | 0 | 0 | 0 | 0 | 0 | 1 | 0 | 1 | 0 | 0 | 0 | 0 | 0 |
| NAMIBIA | 232 | 1 | 0 | 1 | 0 | 0 | 0 | 0 | 0 | 0 | 0 | 0 | 0 | 0 | 0 | 0 | 1 | 0 |
| OMÁN | 425 | 1 | 0 | 1 | 0 | 0 | 0 | 0 | 0 | 0 | 0 | 0 | 0 | 0 | 0 | 0 | 1 | 0 |
| RUANDA | 237 | 1 | 0 | 1 | 0 | 0 | 0 | 0 | 0 | 0 | 0 | 0 | 0 | 0 | 0 | 0 | 0 | 0 |
| SAN MARINO | 129 | 0 | 1 | 1 | 0 | 0 | 0 | 0 | 0 | 0 | 0 | 0 | 0 | 0 | 0 | 0 | 0 | 0 |
| SANTO TOMÉ Y PRÍNCIPE | 238 | 0 | 1 | 1 | 0 | 0 | 0 | 0 | 0 | 0 | 0 | 0 | 0 | 0 | 0 | 0 | 0 | 1 |
| SRI LANKA | 434 | 1 | 0 | 1 | 0 | 0 | 0 | 0 | 0 | 0 | 0 | 0 | 0 | 0 | 0 | 0 | 0 | 0 |
| SUDÁN DEL SUR | 254 | 0 | 1 | 1 | 0 | 0 | 0 | 0 | 0 | 0 | 0 | 0 | 0 | 0 | 0 | 0 | 0 | 0 |
| TANZANIA | 245 | 1 | 0 | 1 | 0 | 0 | 0 | 0 | 0 | 0 | 0 | 0 | 0 | 0 | 0 | 0 | 0 | 0 |
| ZAMBIA | 251 | 0 | 1 | 1 | 0 | 0 | 0 | 0 | 0 | 0 | 0 | 0 | 0 | 0 | 0 | 0 | 0 | 1 |

| | ESO/EGB | | | FP1 | | | Bach/FP2 | | | FP2 Mtria | | | BUP sup. | | | O.T.Med | | | Dipl E.Univ | | | Ing.Te | |
|---|---------|---|---|-----|---|---|----------|---|---|-----------|---|---|----------|---|---|---------|---|---|-------------|---|---|--------|---|
| 2 | 1 | 0 | 1 | 0 | 0 | 0 | 0 | 1 | 1 | 0 | 0 | 0 | 0 | 1 | 1 | 0 | 0 | 0 | 0 | 0 | 0 | 0 | 0 |
| 2 | 0 | 1 | 1 | 0 | 0 | 0 | 1 | 0 | 1 | 0 | 0 | 0 | 0 | 1 | 1 | 0 | 0 | 0 | 0 | 0 | 0 | 0 | 0 |
| 0 | 0 | 0 | 0 | 0 | 0 | 0 | 1 | 0 | 1 | 0 | 0 | 0 | 1 | 0 | 1 | 0 | 0 | 0 | 1 | 0 | 1 | 0 | 0 |
| 2 | 1 | 0 | 1 | 0 | 0 | 0 | 1 | 0 | 1 | 0 | 0 | 0 | 0 | 0 | 0 | 0 | 0 | 0 | 0 | 0 | 0 | 0 | 0 |
| 1 | 0 | 0 | 0 | 0 | 0 | 0 | 0 | 0 | 0 | 0 | 0 | 0 | 0 | 1 | 1 | 0 | 0 | 0 | 0 | 0 | 0 | 0 | 0 |
| 0 | 2 | 0 | 2 | 0 | 0 | 0 | 0 | 0 | 0 | 0 | 0 | 0 | 0 | 0 | 0 | 0 | 0 | 0 | 0 | 0 | 0 | 0 | 0 |
| 0 | 1 | 1 | 2 | 0 | 0 | 0 | 0 | 0 | 0 | 0 | 0 | 0 | 0 | 1 | 1 | 0 | 0 | 0 | 0 | 0 | 0 | 0 | 0 |
| 0 | 0 | 0 | 0 | 0 | 0 | 0 | 2 | 0 | 2 | 0 | 0 | 0 | 0 | 0 | 0 | 0 | 0 | 0 | 0 | 0 | 0 | 0 | 0 |
| 0 | 1 | 0 | 1 | 0 | 0 | 0 | 0 | 0 | 0 | 0 | 0 | 0 | 1 | 0 | 1 | 0 | 0 | 0 | 0 | 0 | 0 | 0 | 0 |
| 0 | 2 | 0 | 2 | 0 | 0 | 0 | 1 | 0 | 1 | 0 | 0 | 0 | 0 | 0 | 0 | 0 | 0 | 0 | 0 | 0 | 0 | 0 | 0 |
| 2 | 0 | 0 | 0 | 0 | 0 | 0 | 1 | 0 | 1 | 0 | 0 | 0 | 0 | 0 | 0 | 0 | 0 | 0 | 0 | 0 | 0 | 0 | 0 |
| 0 | 0 | 0 | 0 | 0 | 0 | 0 | 0 | 1 | 1 | 0 | 0 | 0 | 0 | 0 | 0 | 0 | 0 | 0 | 0 | 0 | 0 | 0 | 0 |
| 1 | 0 | 0 | 0 | 0 | 0 | 0 | 0 | 0 | 0 | 0 | 0 | 0 | 0 | 0 | 0 | 0 | 0 | 0 | 1 | 0 | 1 | 0 | 0 |
| 1 | 0 | 0 | 0 | 0 | 0 | 0 | 0 | 1 | 1 | 0 | 0 | 0 | 0 | 0 | 0 | 0 | 0 | 0 | 0 | 0 | 0 | 0 | 0 |
| 0 | 0 | 0 | 0 | 0 | 0 | 0 | 0 | 0 | 0 | 0 | 0 | 0 | 1 | 0 | 1 | 0 | 0 | 0 | 0 | 0 | 0 | 0 | 0 |
| 1 | 0 | 0 | 0 | 0 | 0 | 0 | 1 | 0 | 1 | 0 | 0 | 0 | 0 | 0 | 0 | 0 | 0 | 0 | 0 | 0 | 0 | 0 | 0 |
| 0 | 0 | 0 | 0 | 0 | 0 | 0 | 0 | 1 | 1 | 0 | 0 | 0 | 1 | 0 | 1 | 0 | 0 | 0 | 0 | 0 | 0 | 0 | 0 |
| 0 | 0 | 0 | 0 | 0 | 0 | 0 | 0 | 0 | 0 | 0 | 0 | 0 | 0 | 0 | 0 | 0 | 0 | 0 | 0 | 0 | 0 | 0 | 0 |
| 0 | 0 | 0 | 0 | 0 | 0 | 0 | 2 | 0 | 2 | 0 | 0 | 0 | 0 | 0 | 0 | 0 | 0 | 0 | 0 | 0 | 0 | 0 | 0 |
| 1 | 0 | 0 | 0 | 0 | 0 | 0 | 0 | 0 | 0 | 0 | 0 | 0 | 1 | 0 | 1 | 0 | 0 | 0 | 0 | 0 | 0 | 0 | 0 |
| 0 | 0 | 0 | 0 | 0 | 0 | 0 | 0 | 0 | 0 | 0 | 0 | 0 | 0 | 0 | 0 | 0 | 0 | 0 | 0 | 0 | 0 | 0 | 1 |
| 1 | 0 | 0 | 0 | 0 | 0 | 0 | 0 | 0 | 0 | 0 | 0 | 0 | 0 | 0 | 0 | 0 | 0 | 0 | 0 | 0 | 0 | 0 | 0 |
| 1 | 0 | 0 | 0 | 0 | 0 | 0 | 1 | 0 | 1 | 0 | 0 | 0 | 0 | 0 | 0 | 0 | 0 | 0 | 0 | 0 | 0 | 0 | 0 |
| 0 | 0 | 0 | 0 | 0 | 0 | 0 | 1 | 0 | 1 | 1 | 0 | 1 | 0 | 0 | 0 | 0 | 0 | 0 | 0 | 0 | 0 | 0 | 0 |
| 0 | 0 | 0 | 0 | 0 | 0 | 0 | 0 | 0 | 0 | 0 | 0 | 0 | 0 | 0 | 0 | 0 | 0 | 0 | 0 | 0 | 0 | 0 | 0 |
| 0 | 1 | 0 | 1 | 0 | 0 | 0 | 0 | 0 | 0 | 0 | 0 | 0 | 0 | 0 | 0 | 0 | 0 | 0 | 0 | 0 | 0 | 0 | 0 |
| 0 | 0 | 0 | 0 | 0 | 0 | 0 | 0 | 0 | 0 | 0 | 0 | 0 | 0 | 0 | 0 | 0 | 0 | 0 | 0 | 0 | 0 | 0 | 0 |
| 0 | 0 | 0 | 0 | 0 | 0 | 0 | 0 | 0 | 0 | 0 | 0 | 0 | 0 | 0 | 0 | 0 | 0 | 0 | 0 | 0 | 0 | 0 | 0 |
| 1 | 0 | 0 | 0 | 0 | 0 | 0 | 0 | 0 | 0 | 0 | 0 | 0 | 0 | 0 | 0 | 0 | 0 | 0 | 0 | 0 | 0 | 0 | 0 |
| 0 | 0 | 0 | 0 | 0 | 0 | 0 | 0 | 0 | 0 | 0 | 0 | 0 | 0 | 0 | 0 | 0 | 0 | 0 | 0 | 0 | 0 | 0 | 0 |
| 1 | 0 | 0 | 0 | 0 | 0 | 0 | 0 | 0 | 0 | 0 | 0 | 0 | 0 | 0 | 0 | 0 | 0 | 0 | 0 | 0 | 0 | 0 | 0 |
| 1 | 0 | 0 | 0 | 0 | 0 | 0 | 0 | 0 | 0 | 0 | 0 | 0 | 0 | 0 | 0 | 0 | 0 | 0 | 0 | 0 | 0 | 0 | 0 |
| 0 | 0 | 0 | 0 | 0 | 0 | 0 | 1 | 0 | 1 | 0 | 0 | 0 | 0 | 0 | 0 | 0 | 0 | 0 | 0 | 0 | 0 | 0 | 0 |
| 0 | 0 | 1 | 1 | 0 | 0 | 0 | 0 | 0 | 0 | 0 | 0 | 0 | 0 | 0 | 0 | 0 | 0 | 0 | 0 | 0 | 0 | 0 | 0 |
| 1 | 0 | 0 | 0 | 0 | 0 | 0 | 0 | 0 | 0 | 0 | 0 | 0 | 0 | 0 | 0 | 0 | 0 | 0 | 0 | 0 | 0 | 0 | 0 |
| 0 | 0 | 0 | 0 | 0 | 0 | 0 | 0 | 0 | 0 | 0 | 0 | 0 | 0 | 0 | 0 | 0 | 0 | 0 | 0 | 0 | 0 | 0 | 0 |
| 0 | 0 | 0 | 0 | 0 | 0 | 0 | 0 | 0 | 0 | 0 | 0 | 0 | 0 | 0 | 0 | 0 | 0 | 0 | 0 | 0 | 0 | 0 | 0 |
| 1 | 0 | 0 | 0 | 0 | 0 | 0 | 0 | 0 | 0 | 0 | 0 | 0 | 0 | 0 | 0 | 0 | 0 | 0 | 0 | 0 | 0 | 0 | 0 |

Estudios por nacionalidad y sexo

| Puesto | Nacionalidad | Nacionalidad | Población | Nota |
|--------|---------------------------|--------------|-----------|------|
| 1 | GUYANA | 346 | 1 | 9,8 |
| 2 | SRI LANKA | 434 | 1 | 9,6 |
| 3 | SUDÁN DEL SUR | 254 | 1 | 9,6 |
| 4 | TANZANIA | 245 | 1 | 9,6 |
| 5 | SINGAPUR | 432 | 2 | 9,5 |
| 6 | MALTA | 118 | 8 | 9,1 |
| 7 | MALASIA | 421 | 2 | 8,5 |
| 8 | TURKMENISTÁN | 446 | 2 | 8,4 |
| 9 | DOMINICA | 316 | 3 | 8,4 |
| 10 | MYANMAR | 405 | 2 | 8,3 |
| 11 | RUANDA | 237 | 1 | 8,3 |
| 12 | JAPÓN | 415 | 52 | 8,2 |
| 13 | SUDÁFRICA | 236 | 16 | 8,2 |
| 14 | MONGOLIA | 423 | 3 | 8,1 |
| 15 | COSTA RICA | 314 | 23 | 8,0 |
| 16 | COREA | 430 | 25 | 7,9 |
| 17 | TAILANDIA | 435 | 7 | 7,9 |
| 18 | MÉXICO | 303 | 233 | 7,9 |
| 19 | AUSTRALIA | 501 | 31 | 7,9 |
| 20 | ESTADOS UNIDOS DE AMÉRICA | 302 | 459 | 7,8 |
| 21 | KENIA | 221 | 5 | 7,8 |
| 22 | MONTENEGRO | 158 | 8 | 7,7 |
| 23 | CHIPRE | 106 | 7 | 7,6 |
| 24 | IRÁN | 413 | 108 | 7,5 |
| 25 | REPÚBLICA CENTROAFRICANA | 235 | 2 | 7,5 |
| 26 | GRECIA | 111 | 170 | 7,5 |
| 27 | BENIN | 204 | 4 | 7,4 |
| 28 | ESLOVENIA | 147 | 32 | 7,4 |
| 29 | KIRGUISTÁN | 444 | 8 | 7,4 |
| 30 | IRLANDA | 113 | 191 | 7,4 |
| 31 | CUBA | 315 | 803 | 7,3 |
| 32 | REINO UNIDO | 125 | 1.417 | 7,3 |
| 33 | EMIRATOS ÁRABES UNIDOS | 408 | 2 | 7,3 |
| 34 | TOGO | 247 | 2 | 7,3 |
| 35 | ITALIA | 115 | 4.824 | 7,3 |
| 36 | CHILE | 344 | 268 | 7,3 |
| 37 | SERBIA | 157 | 78 | 7,2 |
| 38 | SUIZA | 132 | 171 | 7,2 |
| 39 | FINLANDIA | 109 | 104 | 7,2 |
| 40 | AUSTRIA | 102 | 113 | 7,2 |
| 41 | SUECIA | 131 | 395 | 7,2 |
| 42 | PAÍSES BAJOS | 121 | 613 | 7,2 |
| 43 | TURQUÍA | 436 | 57 | 7,1 |
| 44 | VANUATU | 509 | 7 | 7,1 |
| 45 | ALEMANIA | 126 | 1.085 | 7,1 |
| 46 | DINAMARCA | 107 | 149 | 7,1 |
| 47 | CANADÁ | 301 | 95 | 7,1 |
| 48 | CROACIA | 146 | 57 | 7,1 |
| 49 | BRASIL | 342 | 759 | 7,1 |
| 50 | VENEZUELA | 351 | 2.479 | 7,0 |
| 51 | FRANCIA | 110 | 2.465 | 7,0 |
| 52 | FILIPINAS | 409 | 103 | 7,0 |
| 53 | BÉLGICA | 103 | 442 | 7,0 |
| 54 | REPÚBLICA ESLOVACA | 144 | 163 | 7,0 |
| 55 | HUNGRÍA | 112 | 262 | 6,9 |
| 56 | REPÚBLICA CHECA | 143 | 107 | 6,9 |
| 57 | PARAGUAY | 347 | 699 | 6,9 |

| Puesto | Nacionalidad | Nacionalidad | Población | Nota |
|--------|-------------------------|--------------|-----------|------|
| 58 | ARGENTINA | 340 | 2.129 | 6,8 |
| 59 | PERÚ | 348 | 463 | 6,8 |
| 60 | AFGANISTÁN | 401 | 19 | 6,8 |
| 61 | POLONIA | 122 | 943 | 6,8 |
| 62 | NORUEGA | 120 | 230 | 6,8 |
| 63 | INDONESIA | 411 | 26 | 6,7 |
| 64 | PANAMÁ | 324 | 19 | 6,7 |
| 65 | PORTUGAL | 123 | 643 | 6,7 |
| 66 | YEMEN | 441 | 8 | 6,7 |
| 67 | REPÚBLICA DOMINICANA | 326 | 288 | 6,7 |
| 68 | COMORES | 209 | 3 | 6,7 |
| 69 | PALESTINA | 449 | 28 | 6,6 |
| 70 | TÚNEZ | 248 | 44 | 6,6 |
| 71 | EGIPTO | 213 | 86 | 6,6 |
| 72 | IRAK | 412 | 24 | 6,6 |
| 73 | LUXEMBURGO | 117 | 21 | 6,6 |
| 74 | ESTONIA | 141 | 96 | 6,6 |
| 75 | BELARÚS | 138 | 220 | 6,6 |
| 76 | SIERRA LEONA | 241 | 6 | 6,5 |
| 77 | LÍBANO | 420 | 118 | 6,5 |
| 78 | COLOMBIA | 343 | 5.929 | 6,5 |
| 79 | BOLIVIA | 341 | 371 | 6,5 |
| 80 | CHAD | 246 | 2 | 6,5 |
| 81 | ERITREA | 253 | 1 | 6,5 |
| 82 | SAN MARINO | 129 | 1 | 6,5 |
| 83 | RUSIA | 154 | 2.975 | 6,5 |
| 84 | ESPAÑA | 108 | 288.654 | 6,4 |
| 85 | KAZAJSTÁN | 443 | 112 | 6,4 |
| 86 | NICARAGUA | 323 | 70 | 6,4 |
| 87 | CONGO | 210 | 20 | 6,4 |
| 88 | URUGUAY | 350 | 527 | 6,4 |
| 89 | BURKINA FASO | 201 | 4 | 6,4 |
| 90 | EL SALVADOR | 317 | 96 | 6,4 |
| 91 | GUATEMALA | 319 | 29 | 6,4 |
| 92 | LITUANIA | 142 | 343 | 6,3 |
| 93 | JAMAICA | 322 | 5 | 6,3 |
| 94 | JORDANIA | 416 | 33 | 6,3 |
| 95 | UCRANIA | 135 | 2.231 | 6,3 |
| 96 | MOLDAVIA | 137 | 88 | 6,3 |
| 97 | CABO VERDE | 207 | 4 | 6,3 |
| 98 | MALDIVAS | 422 | 1 | 6,3 |
| 99 | NAMIBIA | 232 | 1 | 6,3 |
| 100 | OMÁN | 425 | 1 | 6,3 |
| 101 | SANTO TOMÉ Y PRÍNCIPE | 238 | 1 | 6,3 |
| 102 | UZBEKISTÁN | 447 | 9 | 6,3 |
| 103 | ZAMBIA | 251 | 1 | 6,3 |
| 104 | CAMERÚN | 208 | 75 | 6,2 |
| 105 | BULGARIA | 104 | 1.267 | 6,2 |
| 106 | VIETNAM | 437 | 40 | 6,2 |
| 107 | ISLANDIA | 114 | 53 | 6,2 |
| 108 | GUINEA-BISSAU | 219 | 35 | 6,2 |
| 109 | ALBANIA | 101 | 52 | 6,1 |
| 110 | ANTIGUOS TERRIT.DE S.E. | 966 | 11 | 6,1 |
| 111 | HAITÍ | 320 | 10 | 6,1 |
| 112 | ECUADOR | 345 | 1.090 | 6,1 |
| 113 | LETONIA | 136 | 219 | 6,1 |
| 114 | NUEVA ZELANDA | 504 | 9 | 6,0 |

| Puesto | Nacionalidad | Nacionalidad | Población | Nota |
|--------|-----------------------|--------------|-----------|------|
| 115 | HONDURAS | 321 | 364 | 6,0 |
| 116 | ARMENIA | 148 | 374 | 6,0 |
| 117 | NEPAL | 424 | 22 | 6,0 |
| 118 | GUINEA ECUATORIAL | 220 | 317 | 6,0 |
| 119 | AZERBAIYÁN | 442 | 27 | 6,0 |
| 120 | GEORGIA | 139 | 477 | 6,0 |
| 121 | RUMANÍA | 128 | 3.926 | 5,9 |
| 122 | APÁTRIDAS | 555 | 32 | 5,9 |
| 123 | ISRAEL | 414 | 11 | 5,9 |
| 124 | SUDÁN | 243 | 5 | 5,8 |
| 125 | CHINA | 407 | 1.900 | 5,7 |
| 126 | MAURITANIA | 230 | 26 | 5,7 |
| 127 | MACEDONIA | 156 | 28 | 5,6 |
| 128 | SIRIA | 433 | 233 | 5,6 |
| 129 | ARABIA SAUDÍ | 402 | 22 | 5,6 |
| 130 | GUINEA | 218 | 55 | 5,6 |
| 131 | REP.DEMOCRÁTICA DEL C | 250 | 27 | 5,5 |
| 132 | GHANA | 217 | 65 | 5,5 |
| 133 | INDIA | 410 | 213 | 5,5 |
| 134 | ARGELIA | 203 | 7.892 | 5,3 |
| 135 | SOMALIA | 242 | 2 | 5,2 |
| 136 | PAKISTÁN | 426 | 457 | 5,2 |
| 137 | GAMBIA | 216 | 26 | 5,1 |
| 138 | NIGERIA | 234 | 375 | 5,1 |
| 139 | MARRUECOS | 228 | 4.071 | 5,1 |
| 140 | ETIOPIA | 214 | 17 | 5,1 |
| 141 | LIBIA | 224 | 39 | 5,0 |
| 142 | SENEGAL | 239 | 596 | 5,0 |
| 143 | BANGLADESH | 404 | 161 | 5,0 |
| 144 | ANGOLA | 202 | 14 | 4,8 |
| 145 | COSTA DE MARFIL | 211 | 43 | 4,8 |
| 146 | MALI | 227 | 87 | 4,7 |
| 147 | BOSNIA-HERZEGOVINA | 145 | 12 | 4,7 |
| 148 | LIBERIA | 223 | 8 | 4,5 |
| 149 | MADAGASCAR | 225 | 1 | 4,4 |
| 150 | MAURICIO | 229 | 1 | 4,4 |
| 151 | MOZAMBIQUE | 231 | 2 | 4,4 |
| 152 | ZIMBABWE | 252 | 5 | 4,3 |
| 153 | ANDORRA | 124 | 4 | 4,2 |
| 154 | ANTIGUA Y BARBUDA | 310 | 1 | 4,2 |